



2009 6 24

平成21年3月期

(2009年3月期)

決算説明会 補足資料



株式会社 ワークマン

10
11
12
13
14
15

1
2
3
4
5
5
6
7
7
8
9
9
10
11
12
13
14
14
15

	25		26		27		28			29	
	2006 (18)3		2007 (19)3		2008 (20)3		2009 (21)3			2010 (22)3	
									()		
	8,526,374	93.4%	7,097,626	83.2%	6,395,192	90.1%	6,482,748	101.4%	98.8%	6,913,200	106.6%
	35,234,340	117.1%	40,119,565	113.9%	43,465,312	108.3%	42,986,586	98.9%	94.6%	42,586,800	99.1%
	43,760,714	111.6%	47,217,191	107.9%	49,860,505	105.6%	49,469,335	99.2%	95.2%	49,500,000	100.1%
	4,818,972	118.5%	5,463,472	113.4%	5,896,865	107.9%	5,601,767	95.0%	91.3%	5,603,480	100.0%
	2,584,478	113.2%	2,767,397	107.1%	2,987,348	107.9%	3,017,822	101.0%	96.1%	3,002,680	99.5%
	7,403,450	116.6%	8,230,870	111.2%	8,884,213	107.9%	8,619,589	97.0%	92.9%	8,606,160	99.8%
	8,526,374	93.4%	7,097,626	83.2%	6,395,192	90.1%	6,482,748	101.4%	98.8%	6,913,200	106.6%
	15,017,634	115.4%	16,913,128	112.6%	19,034,619	112.5%	19,709,628	103.5%	95.0%	20,232,150	102.7%
	23,544,008	106.3%	24,010,754	102.0%	25,429,811	105.9%	26,192,376	103.0%	95.9%	27,145,350	103.6%
	30,947,459	108.6%	32,241,625	104.2%	34,314,025	106.4%	34,811,965	101.5%	95.2%	35,751,510	102.7%
	20,508,873	107.7%	21,384,837	104.3%	23,011,713	107.6%	23,823,873	103.5%	96.0%	24,557,730	103.1%
	(3,035,135)	97.8%	(2,625,916)	86.5%	(2,418,098)	92.1%	(2,368,503)	97.9%	95.6%	(2,587,620)	109.3%
	10,438,586	110.4%	10,856,787	104.0%	11,302,311	104.1%	10,988,092	97.2%	93.5%	11,193,780	101.9%
	6,926,107	101.8%	6,794,817	98.1%	6,897,195	101.5%	7,091,451	102.8%	98.4%	7,226,700	101.9%
	3,512,478	132.6%	4,061,970	115.6%	4,405,116	108.4%	3,896,640	88.5%	85.7%	3,967,080	101.8%
	4,278,354	126.7%	4,881,186	114.1%	5,300,940	108.6%	4,826,896	91.1%	88.5%	4,850,000	100.5%
	2,353,746	125.3%	2,698,709	114.7%	2,962,468	109.8%	2,710,279	91.5%	88.1%	2,729,340	100.7%
	112 68		131 89		144 78		132 58			133 77	
	22 50		26 50		37 00		37 00			37 00	
	200%		201%		25.6%		27.9%			27.7%	
	10,230,852		10,230,852		20,461,704		20,461,704			20,461,704	
	464,125		489,360		546,943		547,118			525,660	
	452,263		672,351		923,824		696,554			445,900	

26

2007 12 1

25

2005 6

27 2007 12 1

28

2008 11 5

4 1 9 31

	25			26			27			28				29		
	2005 (17)4 9			2006 (18)4 9			2007 (19)4 9			2008 (20)4 9				2009 (21)4 9		
	4,041,880	89.9%	47.4%	3,574,287	88.4%	50.4%	3,191,095	89.3%	49.9%	3,156,983	98.9%	48.7%	96.4%	3,178,700	100.7%	46.0%
	15,873,925	116.9%	45.1%	18,702,203	117.8%	46.6%	20,225,104	108.1%	46.5%	21,056,374	104.1%	49.0%	97.3%	20,228,900	96.1%	47.5%
	19,915,806	110.2%	45.5%	22,276,491	111.9%	47.2%	23,416,200	105.1%	47.0%	24,213,357	103.4%	48.9%	97.2%	23,407,600	96.7%	47.3%
	2,096,804	117.6%	43.5%	2,509,379	119.7%	45.9%	2,668,799	106.4%	45.3%	2,733,035	102.4%	48.8%	95.3%	2,580,410	94.4%	46.1%
	1,195,626	110.1%	46.3%	1,298,778	108.6%	46.9%	1,405,257	108.2%	47.0%	1,476,087	105.0%	48.9%	98.7%	1,409,580	95.5%	46.9%
	3,292,431	114.8%	44.5%	3,808,158	115.7%	46.3%	4,074,056	107.0%	45.9%	4,209,123	103.3%	48.8%	96.5%	3,989,990	94.8%	46.4%
	4,041,880	89.9%	47.4%	3,574,287	88.4%	50.4%	3,191,095	89.3%	49.9%	3,156,983	98.9%	48.7%	96.4%	3,178,700	100.7%	46.0%
	6,971,159	116.6%	46.4%	8,014,112	115.0%	47.4%	8,782,475	109.6%	46.1%	9,800,815	111.6%	49.7%	100.4%	9,714,870	99.1%	48.0%
	11,013,040	105.2%	46.8%	11,588,400	105.2%	48.3%	11,973,570	103.3%	47.1%	12,957,799	108.2%	49.5%	99.4%	12,893,570	99.5%	47.5%
	14,305,471	107.2%	46.2%	15,396,559	107.6%	47.8%	16,047,627	104.2%	46.8%	17,166,923	107.0%	49.3%	98.7%	16,883,560	98.3%	47.2%
	9,584,699	107.1%	46.7%	10,268,134	107.1%	48.0%	10,765,476	104.8%	46.8%	11,783,331	109.5%	49.5%	100.2%	11,688,150	99.2%	47.6%
	(1,428,340)	93.7%	47.1%	(1,320,265)	92.4%	50.3%	(1,208,093)	91.5%	50.0%	(1,174,467)	97.2%	49.6%	92.4%	(1,205,420)	102.6%	46.6%
	4,720,772	107.5%	45.2%	5,128,424	108.6%	47.2%	5,282,150	103.0%	46.7%	5,383,591	101.9%	49.0%	95.5%	5,195,410	96.5%	46.4%
	3,408,754	99.5%	49.2%	3,390,132	99.5%	49.9%	3,417,928	100.8%	49.6%	3,522,012	103.0%	49.7%	98.3%	3,587,360	101.9%	49.6%
	1,312,017	135.4%	37.4%	1,738,292	132.5%	42.8%	1,864,221	107.2%	42.3%	1,861,579	99.9%	47.8%	90.8%	1,608,050	86.4%	40.5%
	1,663,690	126.1%	38.9%	2,124,924	127.7%	43.5%	2,292,636	107.9%	43.2%	2,316,924	101.1%	48.0%	94.2%	2,038,730	88.0%	42.0%
	853,693	124.6%	36.3%	1,074,817	125.9%	39.8%	1,195,951	111.3%	40.4%	1,236,633	103.4%	45.6%	94.7%	1,062,150	85.9%	38.9%
	41 74			52 53			58 45			60 44				52 06		
	10,230,852			10,230,852			10,230,852			20,461,704				20,461,704		

27

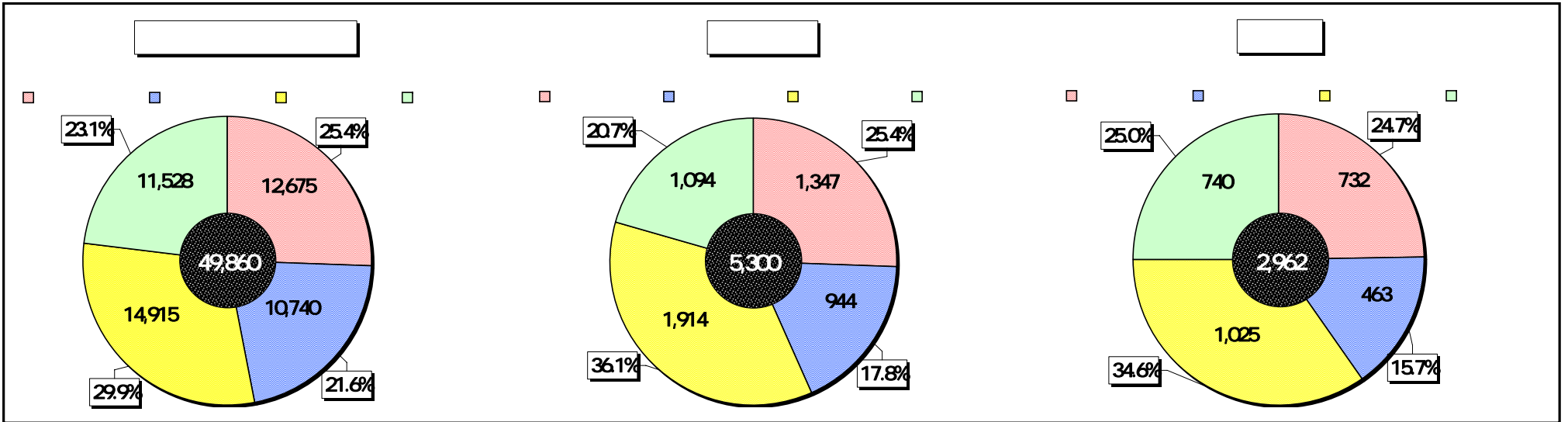
25

2007 12 1

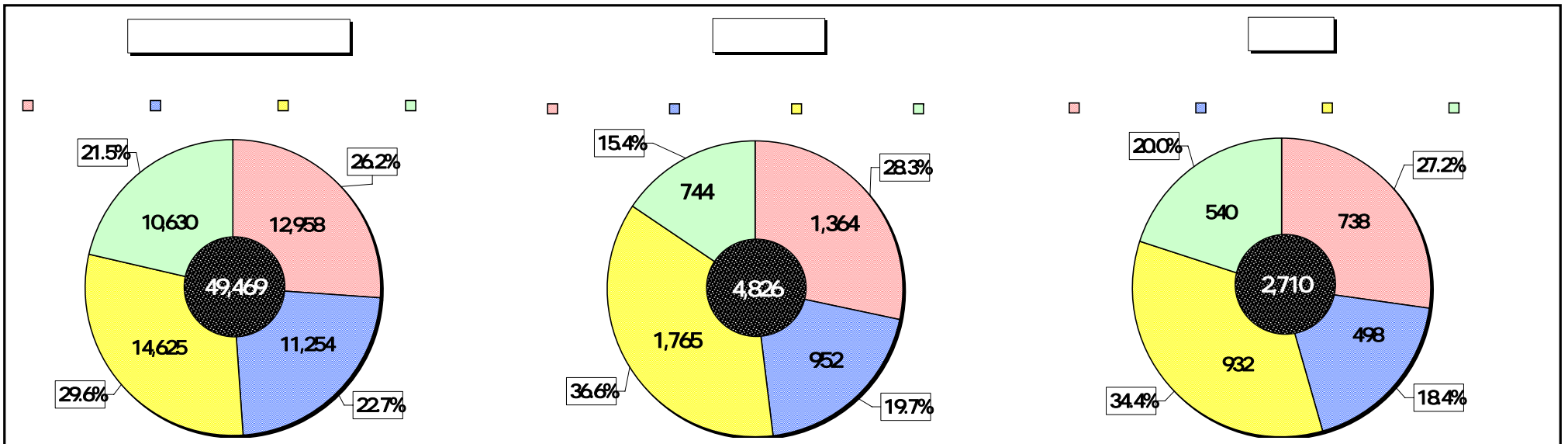
2005 6

28 2007 12 1

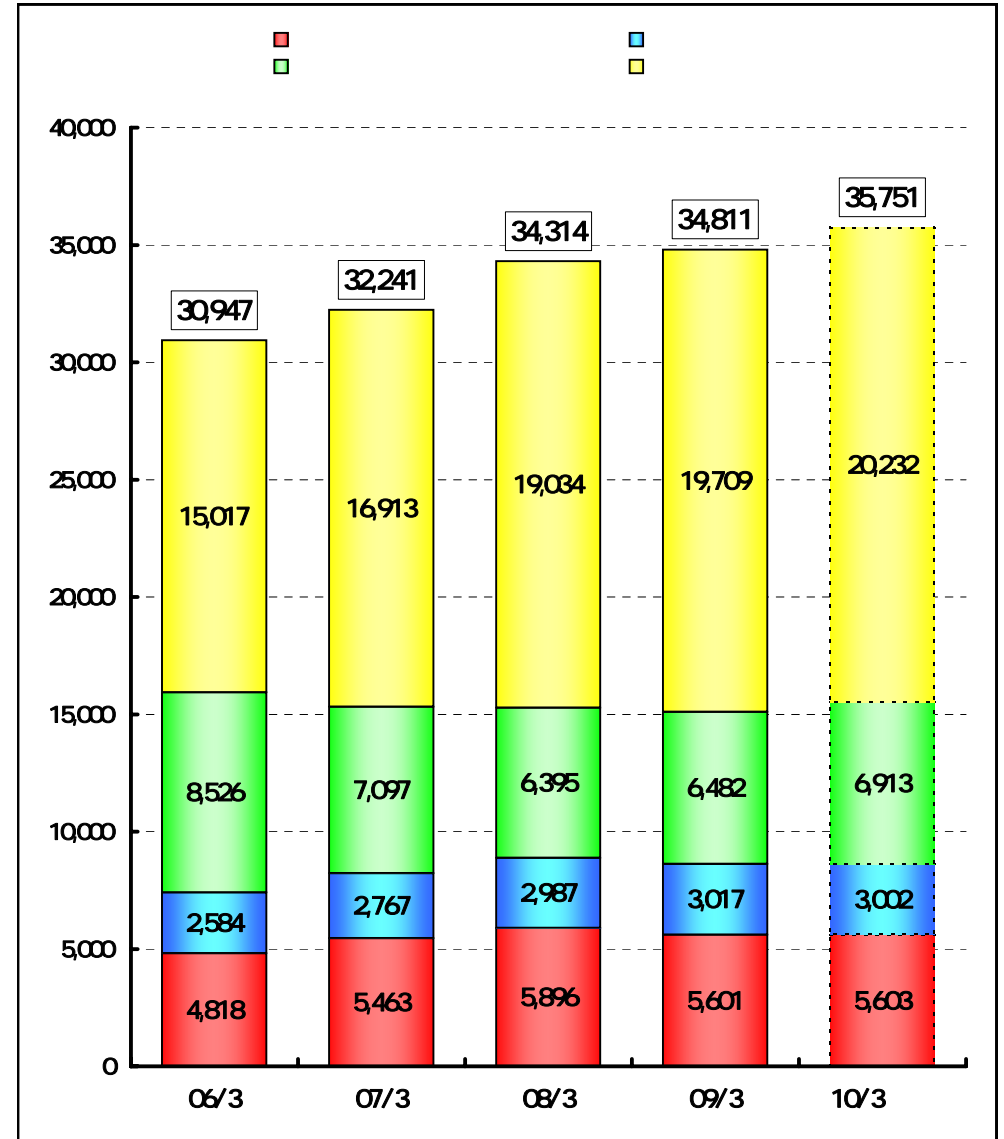
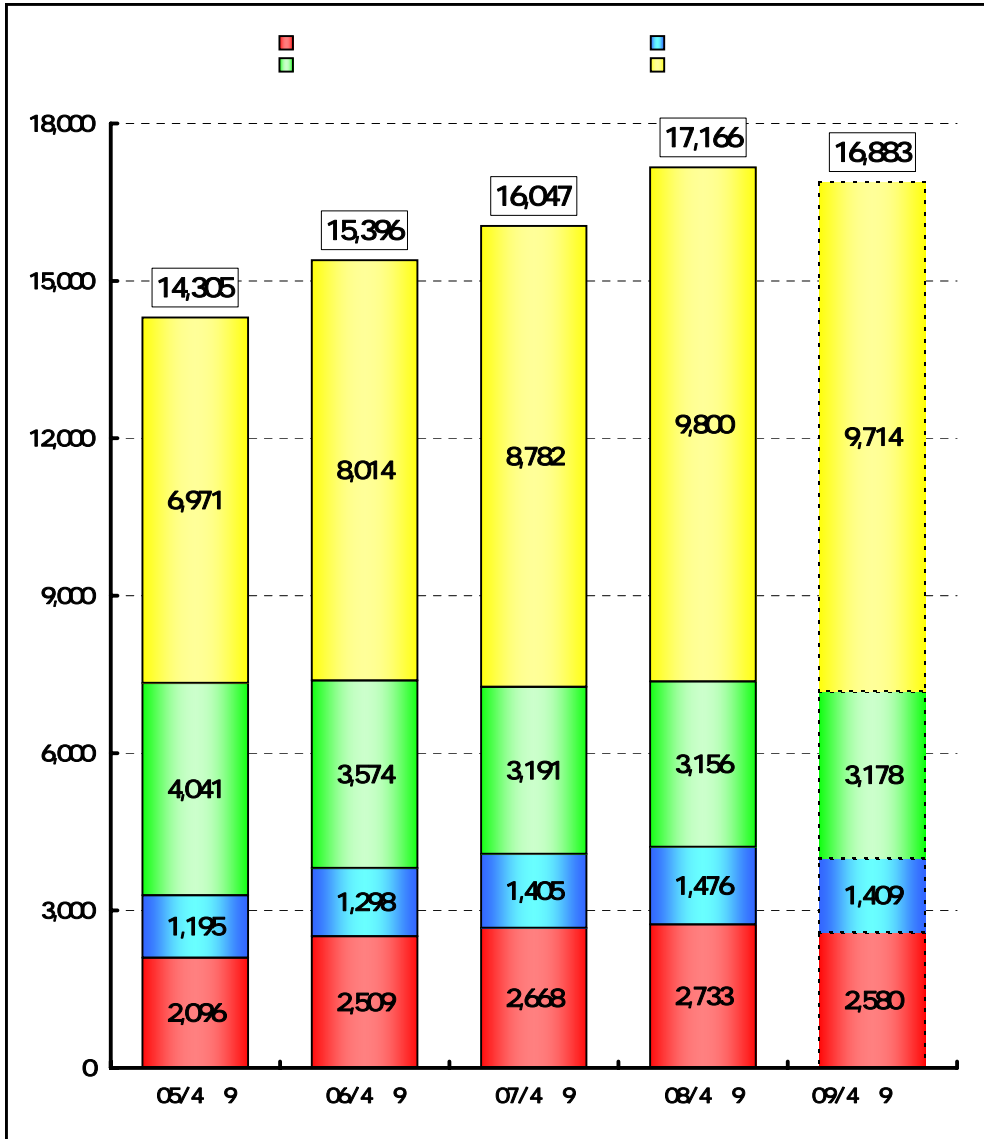
2008 3



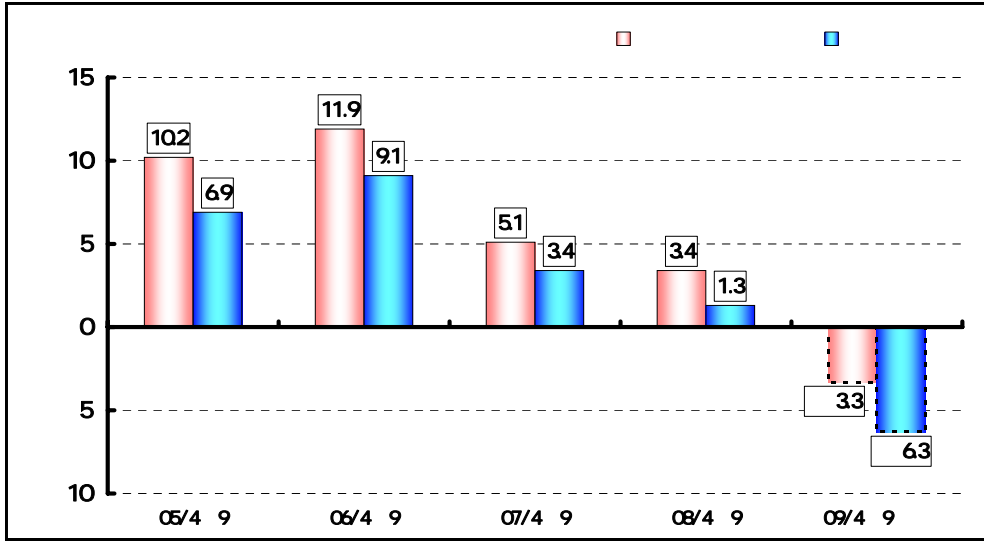
2009 3



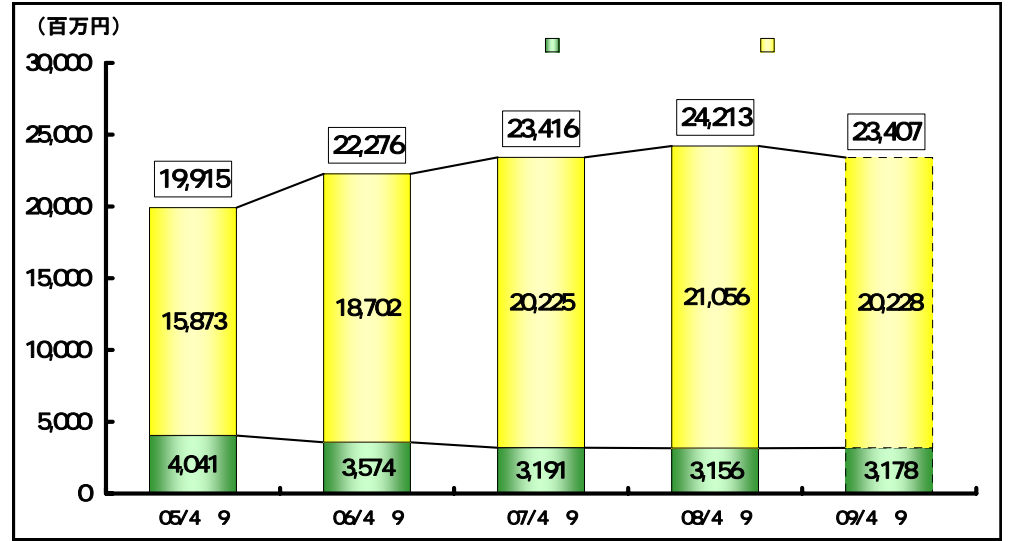
4 1 9 30



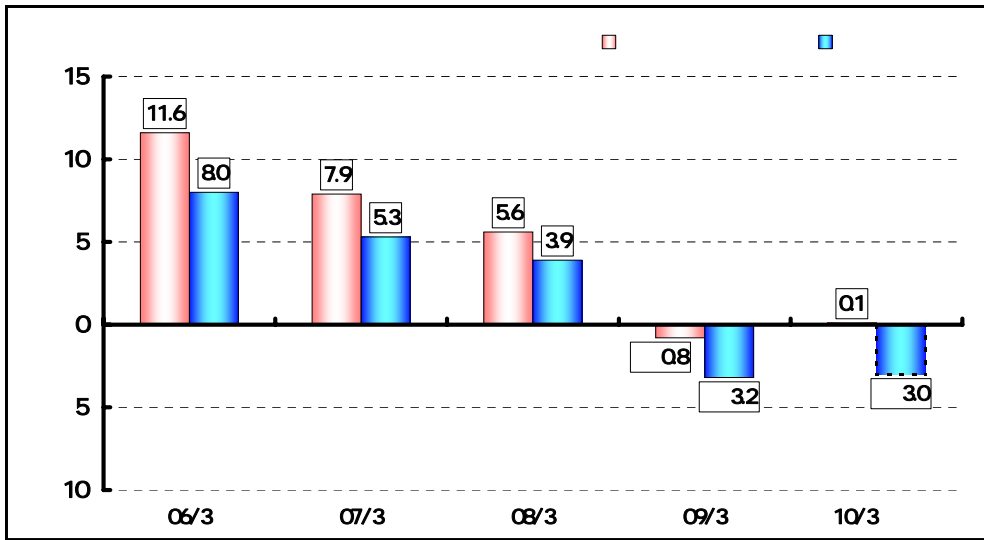
4 1 9 30



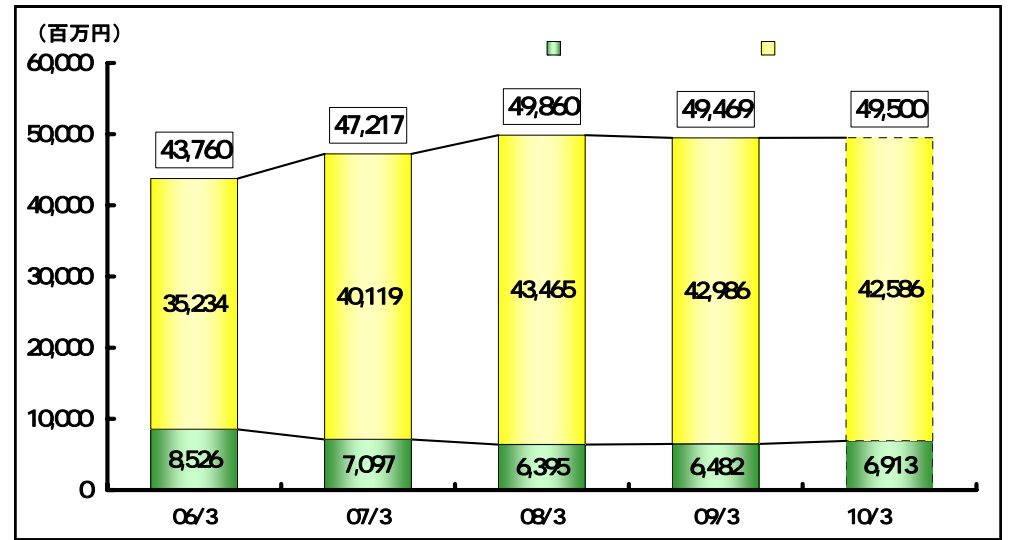
4 1 9 30

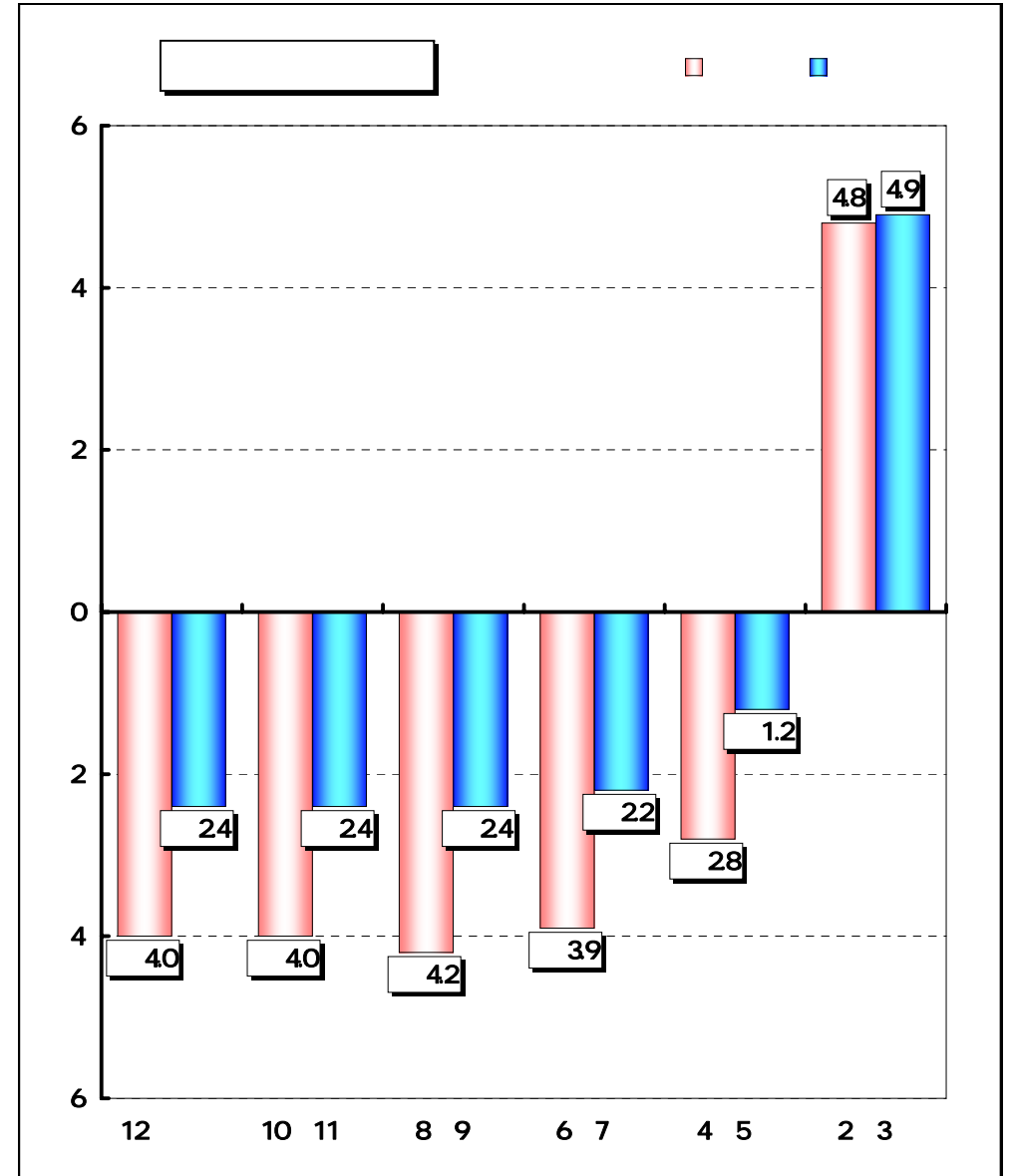
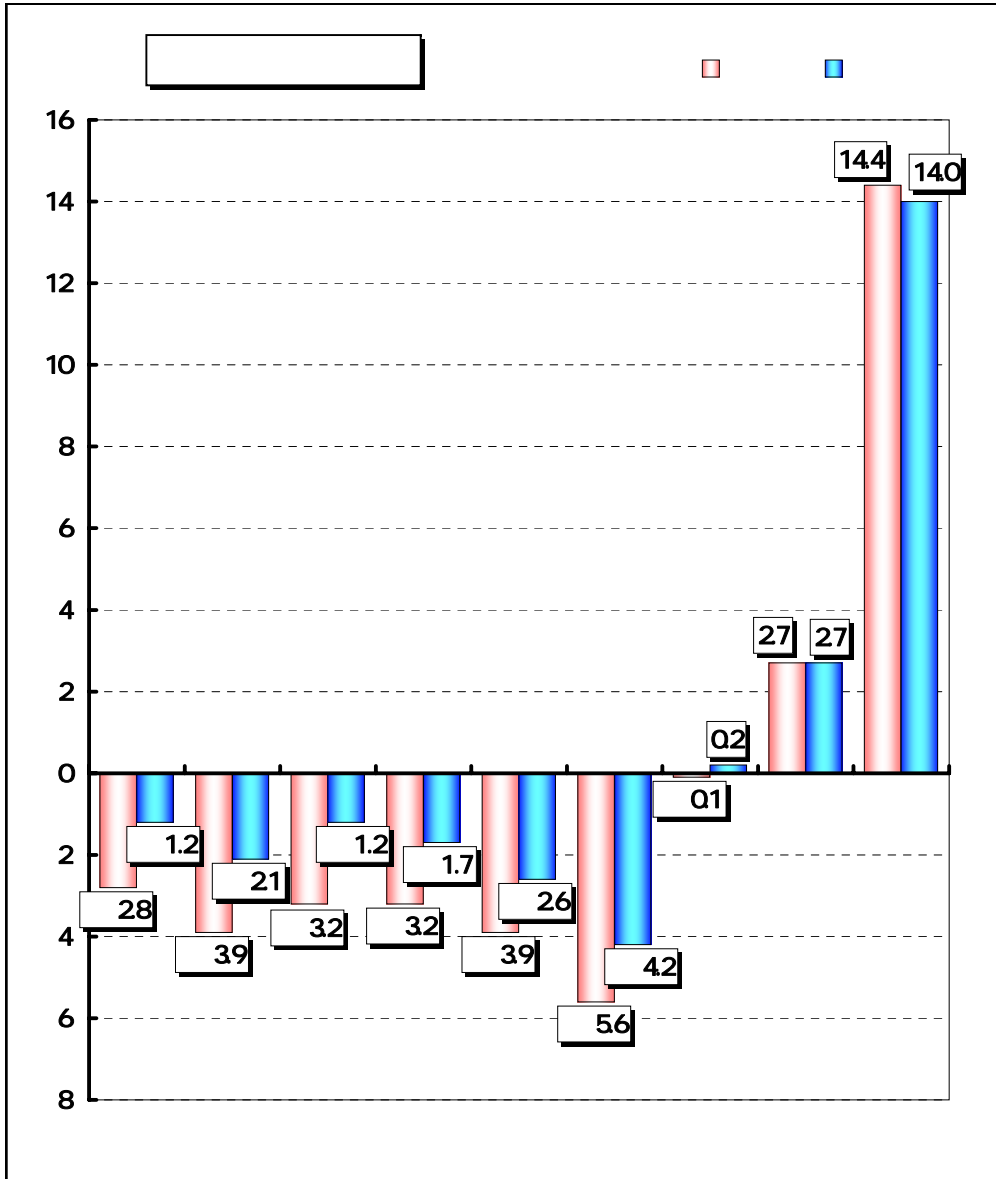


15



(百万円)





2006 3

	4	5	6	7	8	9	10	11	12	1	2	3	
	399	403	404	403	403	407	418	417	420	421	420	420	411
	132	130	132	131	128	132	118	117	116	118	123	127	125
	18	17	17	21	23	22	24	28	27	26	24	23	23
	549	550	553	555	554	561	560	562	563	565	567	570	559
	727	733	731	726	727	725	746	742	746	745	741	737	735

2007 3

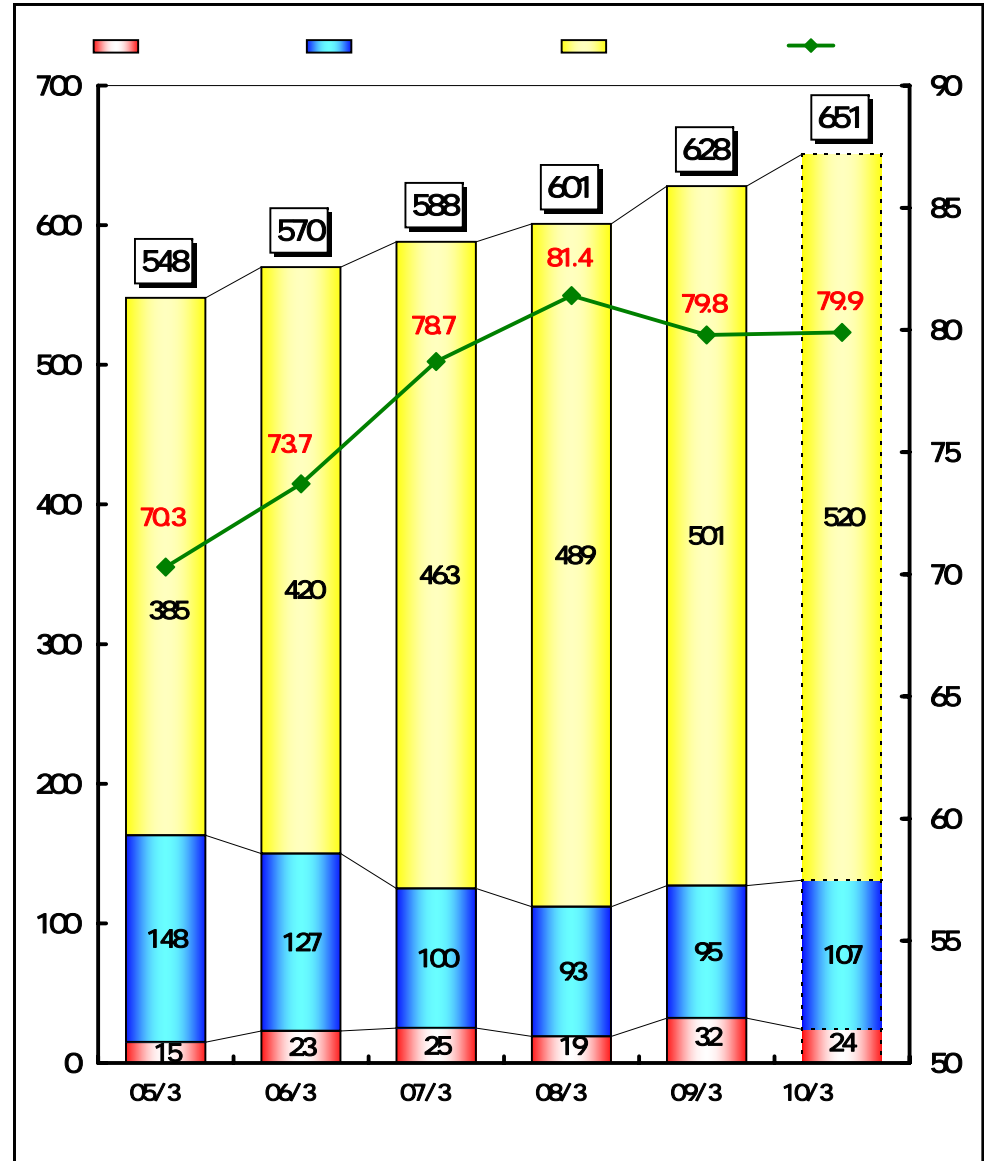
	4	5	6	7	8	9	10	11	12	1	2	3	
	443	444	442	441	441	440	462	463	463	463	464	463	452
	107	107	109	110	110	117	93	93	95	95	98	100	103
	20	19	19	21	21	17	21	21	22	22	20	25	21
	570	570	570	572	572	574	576	577	580	580	582	588	576
	77.7	77.9	77.5	77.1	77.1	76.7	80.2	80.2	79.8	79.8	79.7	78.7	78.5

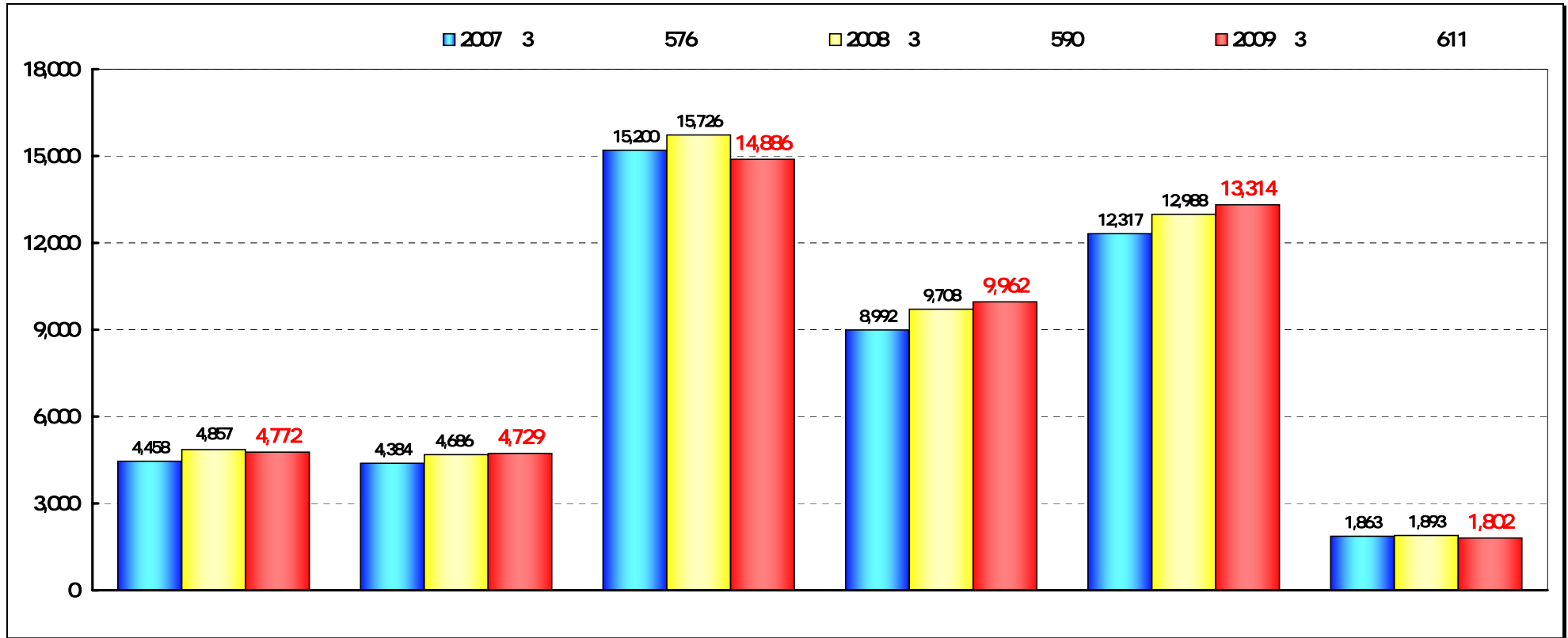
2008 3

	4	5	6	7	8	9	10	11	12	1	2	3	
	469	469	473	471	470	473	488	487	487	487	487	489	479
	94	94	93	94	92	96	85	85	87	88	90	93	91
	24	24	20	22	22	20	16	18	19	18	17	19	20
	587	587	586	587	584	589	589	590	593	593	594	601	590
	79.9	79.9	80.7	80.2	80.5	80.3	82.9	82.5	82.1	82.1	82.0	81.4	81.2

2009 3

	4	5	6	7	8	9	10	11	12	1	2	3	
	494	493	492	490	490	493	503	502	503	501	501	501	497
	93	95	98	97	99	99	90	89	87	90	91	95	93
	17	18	14	17	15	17	18	20	23	28	30	32	21
	604	606	604	604	604	609	611	611	613	619	622	628	611
	81.8	81.4	81.5	81.1	81.1	81.0	82.3	82.2	82.1	80.9	80.5	79.8	81.3

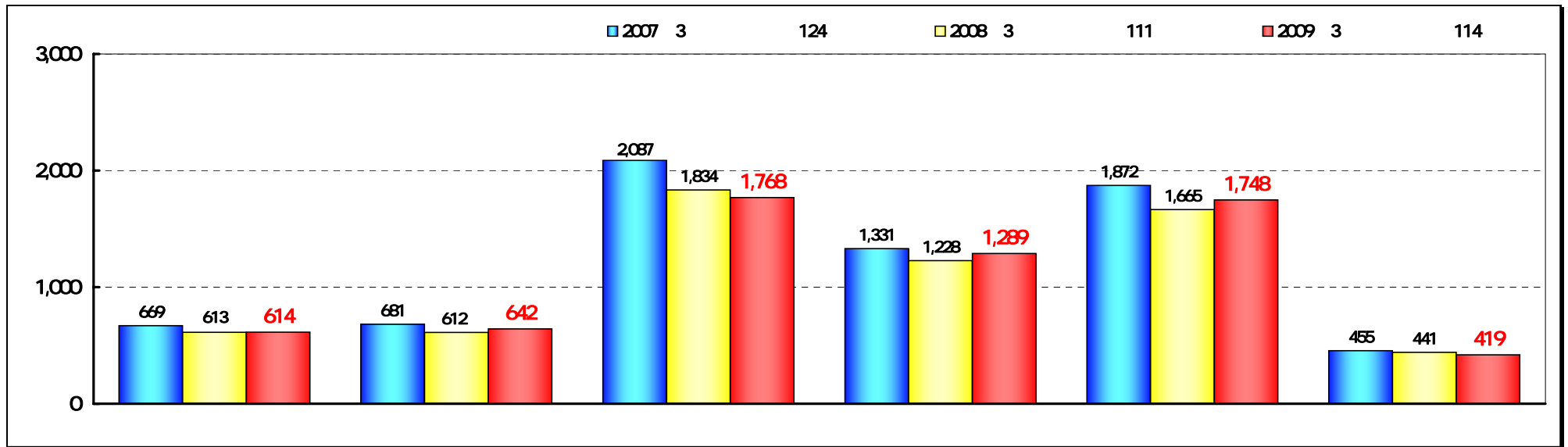
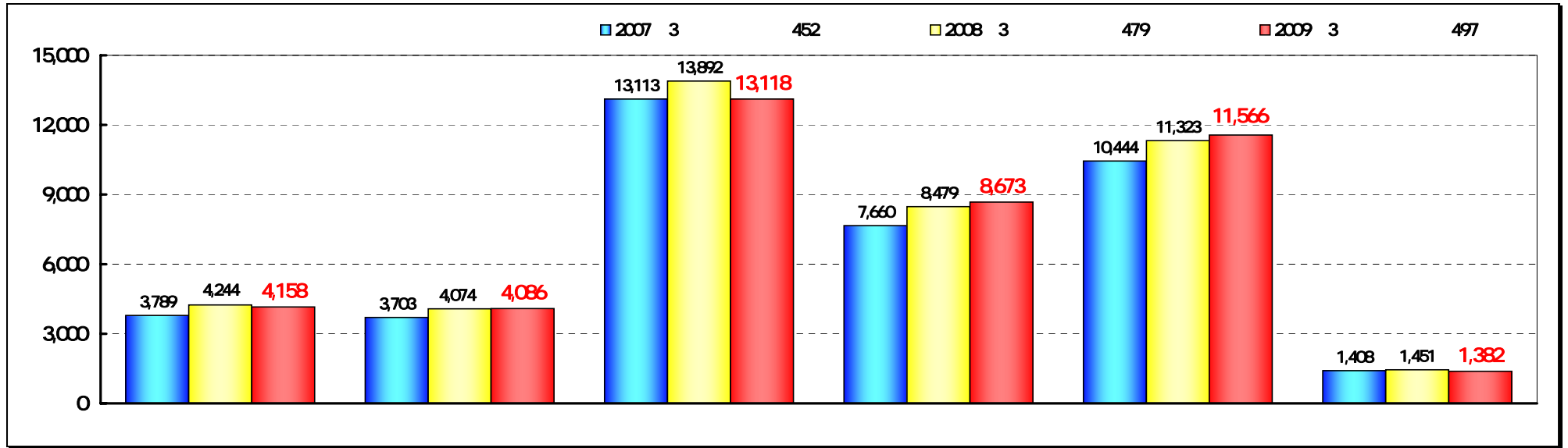


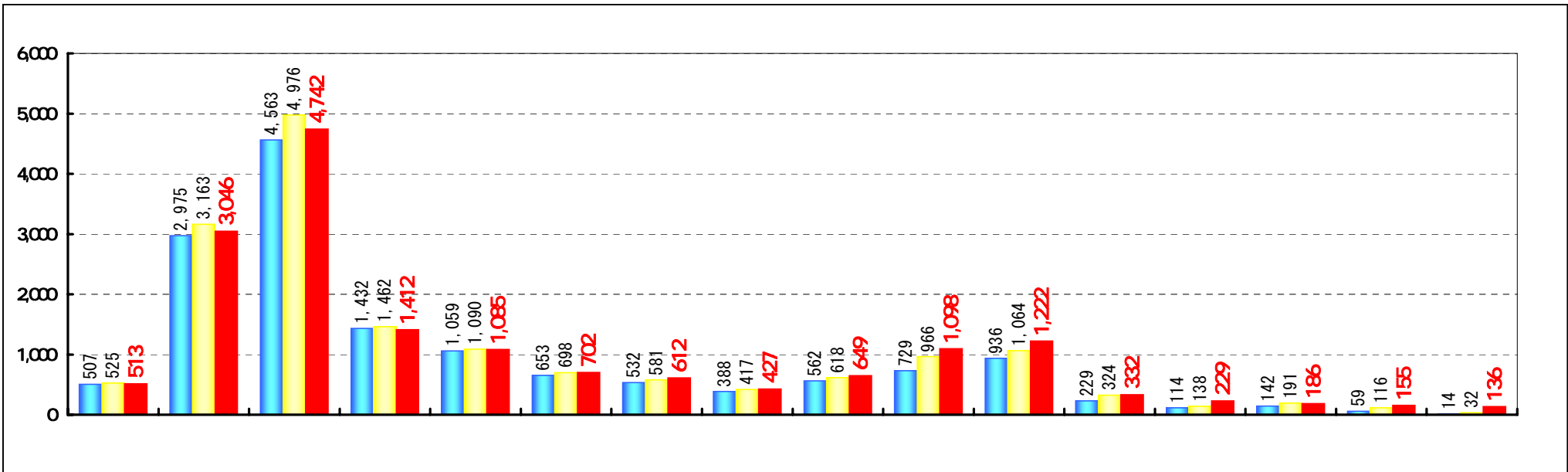
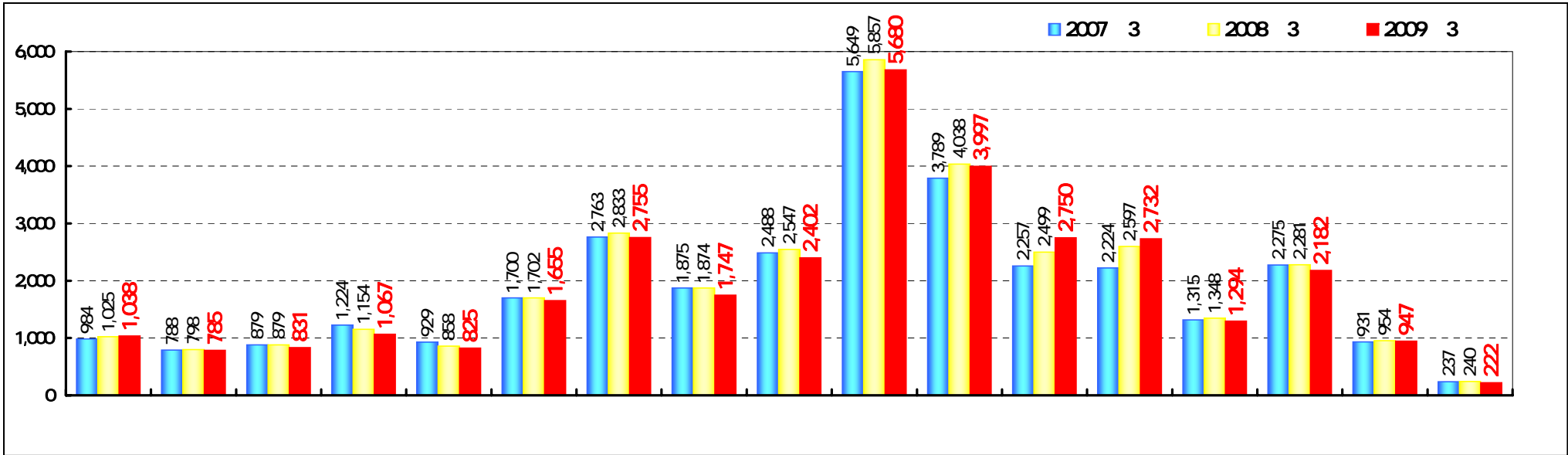


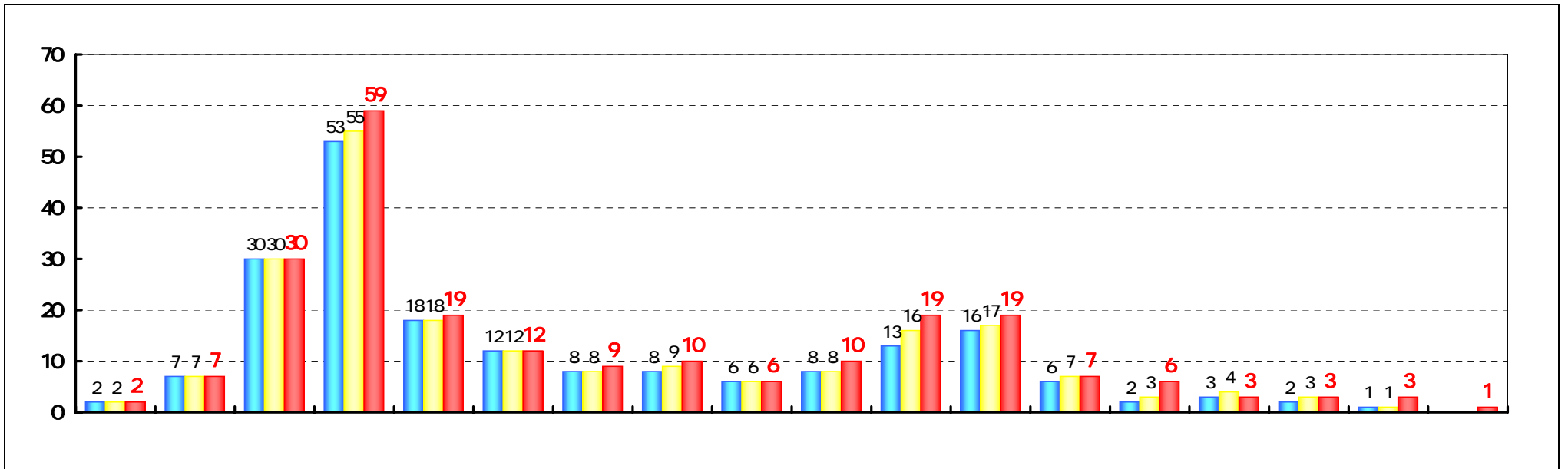
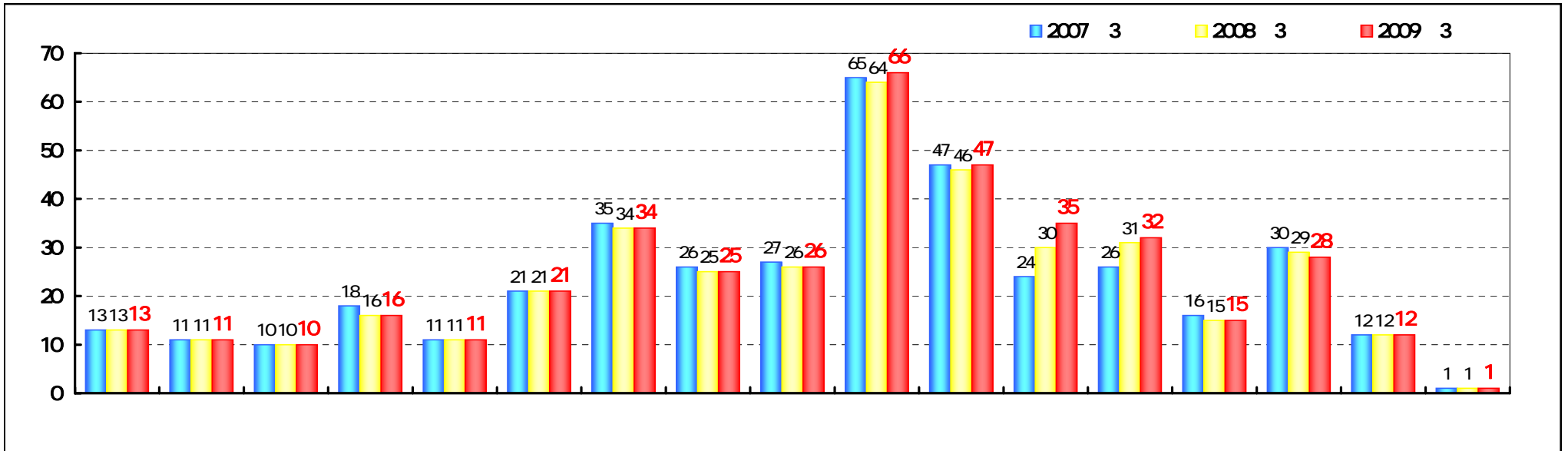
	2007 3	2008 3	2009 3
	4,458	4,857	4,772
	4,384	4,686	4,729
	15,200	15,726	14,886
	8,992	9,708	9,962
	12,317	12,988	13,314
	1,863	1,893	1,802
	47,217	49,860	49,469

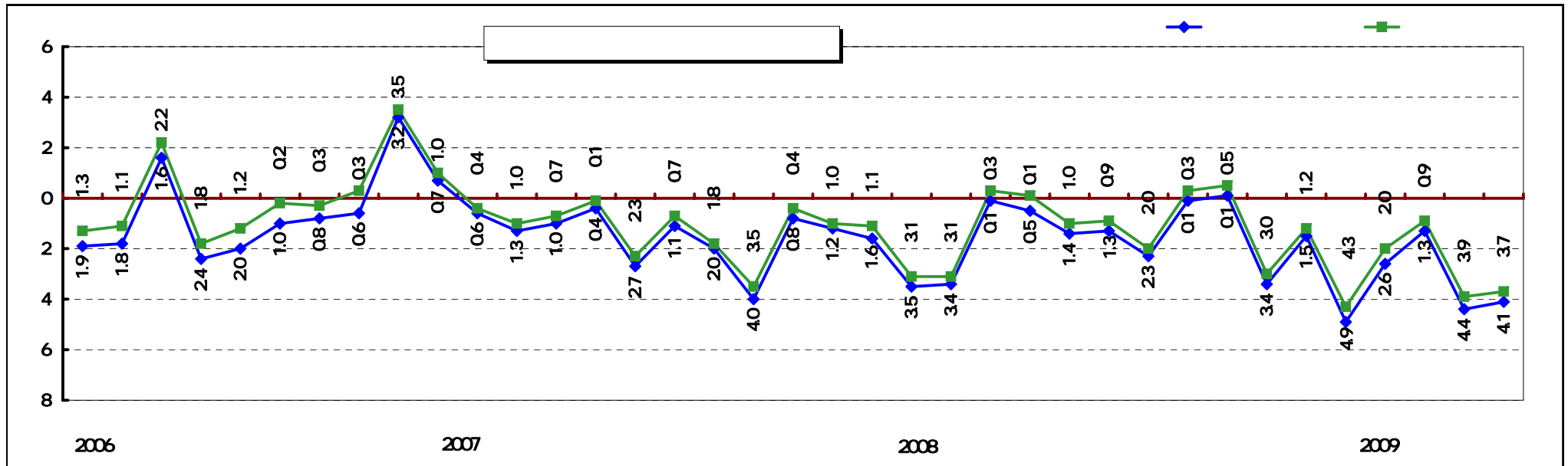
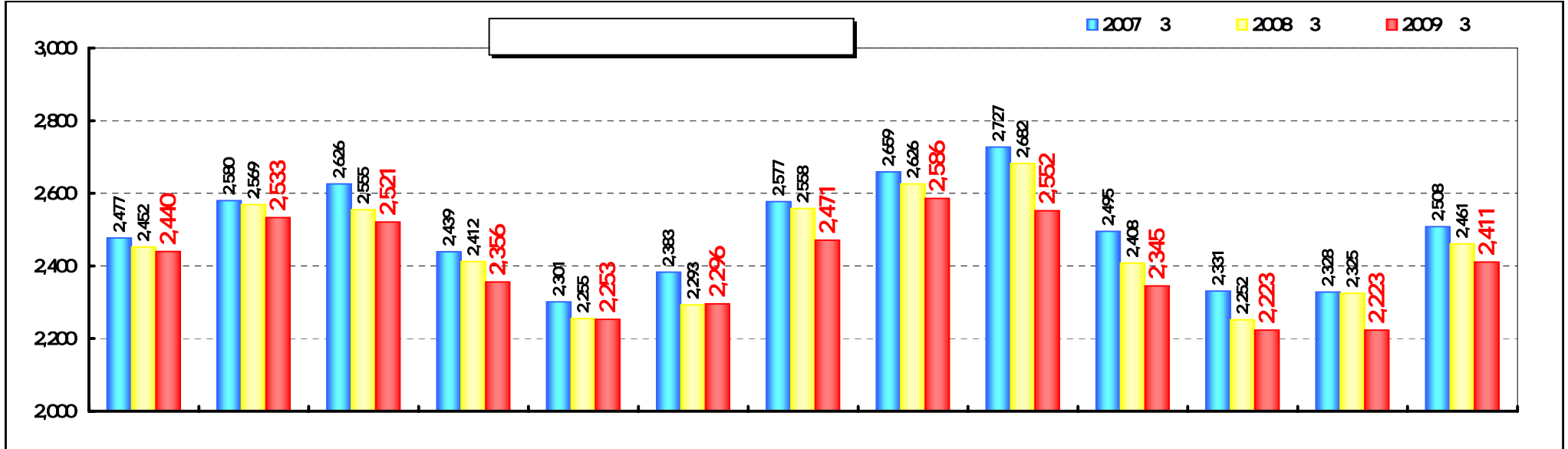
	2007 3	2008 3	2009 3
	3.9%	8.9%	1.7%
	8.5%	6.9%	0.9%
	6.5%	3.5%	5.3%
	9.5%	8.0%	2.6%
	11.0%	5.4%	2.5%
	1.1%	1.6%	4.8%
	7.9%	5.6%	0.8%

	2007 3	2008 3	2009 3
	9.4%	9.7%	9.7%
	9.3%	9.4%	9.6%
	32.2%	31.5%	30.1%
	19.0%	19.5%	20.1%
	26.1%	26.1%	26.9%
	4.0%	3.8%	3.6%
	100.0%	100.0%	100.0%









13

	2006 3			2007 3			2008 3			2009 3			
	827,387	316,139	38.2%	669,571	261,133	39.0%	613,353	246,677	40.2%	614,170	245,094	39.9%	0.3%
	810,793	297,934	36.7%	681,429	262,171	38.5%	612,316	244,351	39.9%	642,847	254,062	39.5%	0.4%
	2,549,960	930,551	36.5%	2,087,343	799,852	38.3%	1,834,262	728,804	39.7%	1,768,212	669,625	37.9%	1.8%
	1,600,179	580,621	36.3%	1,331,474	514,715	38.7%	1,228,843	483,971	39.4%	1,289,328	487,685	37.8%	1.6%
	2,226,984	771,555	34.6%	1,872,375	659,141	35.2%	1,665,041	588,912	35.4%	1,748,349	595,176	34.0%	1.4%
	511,067	138,334	27.1%	455,431	128,902	28.3%	441,376	125,380	28.4%	419,839	116,858	27.8%	0.6%
	8,526,374	3,035,135	35.6%	7,097,626	2,625,916	37.0%	6,395,192	2,418,098	37.8%	6,482,748	2,368,503	36.5%	1.3%

14

	2006 3		2007 3		2008 3		2009 3		
	1,363,034	103.3%	1,433,445	105.2%	1,494,085	104.2%	1,529,407	102.4%	35,322
	628,693	119.9%	577,426	91.8%	521,902	90.4%	503,507	96.5%	18,394
	278,448	97.7%	286,328	102.8%	281,609	98.4%	281,664	100.0%	54
	605,477	111.2%	707,086	116.8%	771,854	109.2%	807,926	104.7%	36,072
	1,318,175	92.7%	1,200,178	91.0%	1,162,483	96.9%	1,202,805	103.5%	40,321
	207,050	116.1%	199,215	96.2%	189,120	94.9%	231,427	122.4%	42,307
	1,114,755	92.5%	1,022,714	91.7%	989,832	96.8%	1,024,093	103.5%	34,261
	464,125	107.0%	489,360	105.4%	546,943	111.8%	547,118	100.0%	175
	946,346	105.7%	879,058	92.9%	939,363	106.9%	963,500	102.6%	24,136
	6,926,107	101.8%	6,794,817	98.1%	6,897,195	101.5%	7,091,451	102.8%	194,256

2007 3

	2006 3	2007 3	2008 3	2009 3
	11.3%	12.6%	12.8%	11.2%
	9.8%	10.3%	10.6%	9.8%
	17.7%	18.1%	18.0%	15.4%
	13.6%	13.9%	13.7%	11.4%
	218.4%	242.6%	268.6%	310.5%
	63.1%	58.2%	54.5%	52.7%
	60.0%	55.6%	52.3%	50.2%
	71.0%	72.8%	74.7%	77.0%
	112 68	131 89	144 78	132 58
	890 61	1,000 00	1,118 24	1,214 02
	25	26	1.3	0.9
	19.7	19.9	9.7	7.9
	20.0%	20.1%	25.6%	27.9%
	464,125	489,360	546,943	547,118
	452,263	672,351	923,824	696,554
	3,438,076	3,016,326	3,613,911	2,444,837
	1,092,329	951,609	1,221,000	1,013,300
	346,628	477,423	559,816	841,583
	1,999,118	1,587,293	1,833,094	589,953
	2,662,301	5,721,420	7,308,714	9,141,808
	1,060,000			
	5,721,420	7,308,714	9,141,808	9,731,762
	460,380	542,225	757,064	754,925
	48,830	50,150	53,020	51,000

2007 3

2007 12 1



株式会社 ワークマン

TEL 03-3847-8190

E-mail: wm_seibi@workman.co.jp

URL: <http://www.workman.co.jp/>