

第26期

決算説明会 補足資料



株式会社 ワークマン

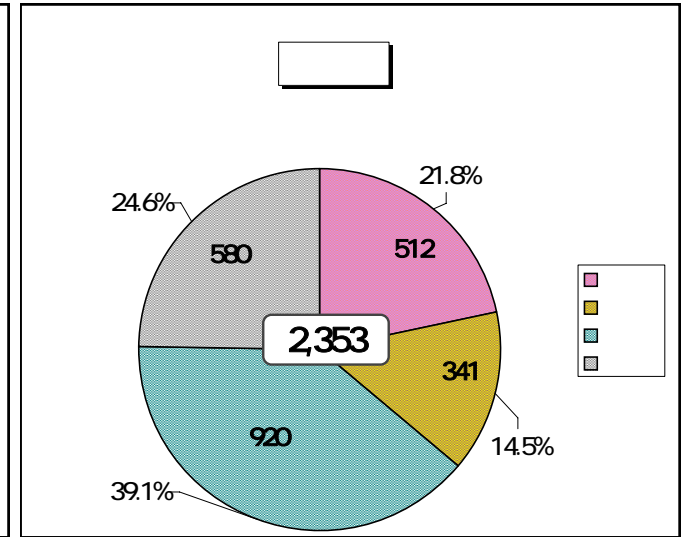
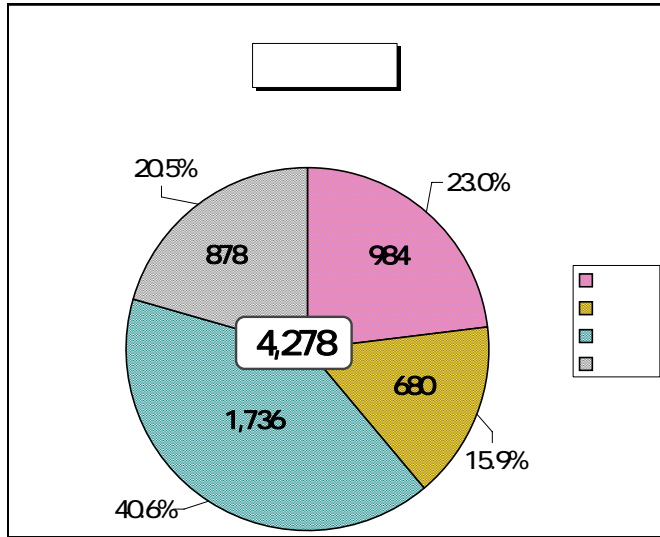
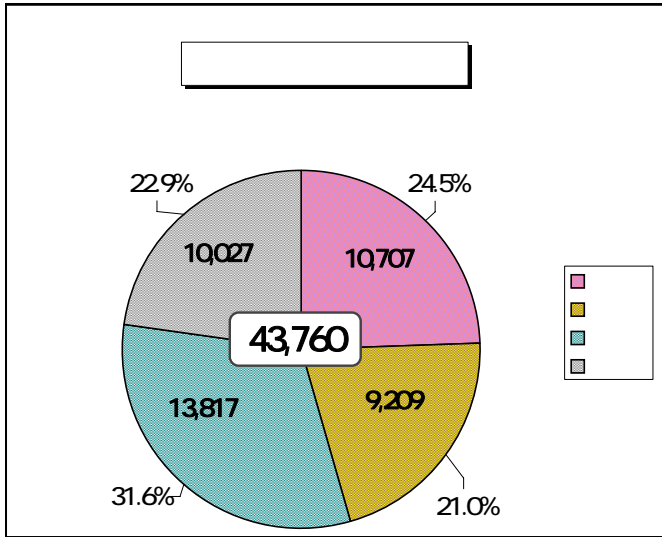
JASDAQ 7564

10
11
12
13
14

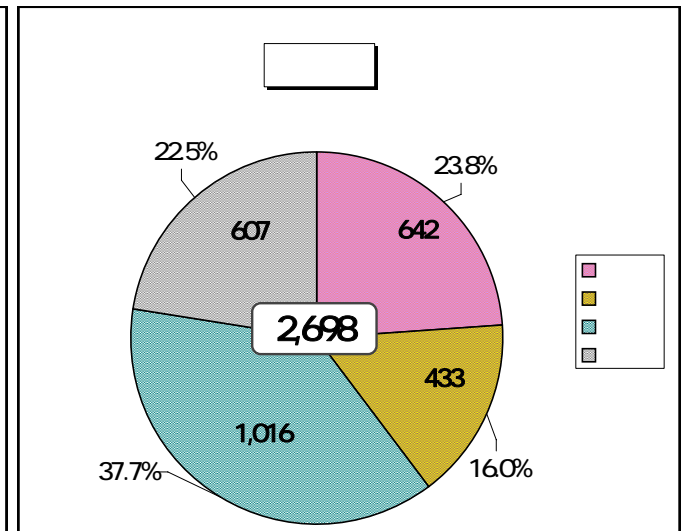
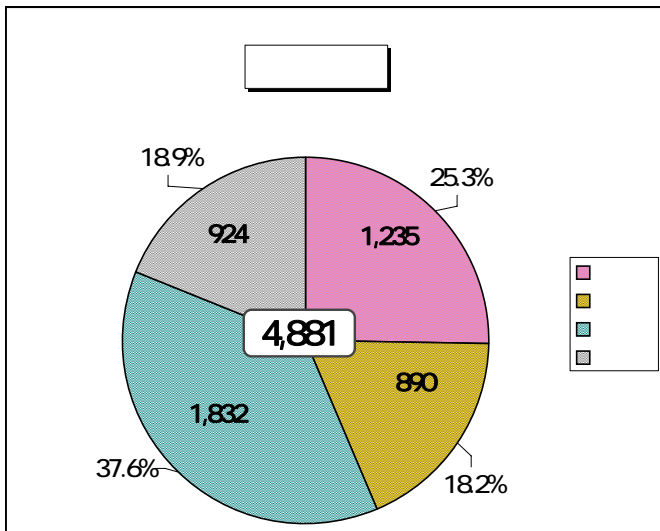
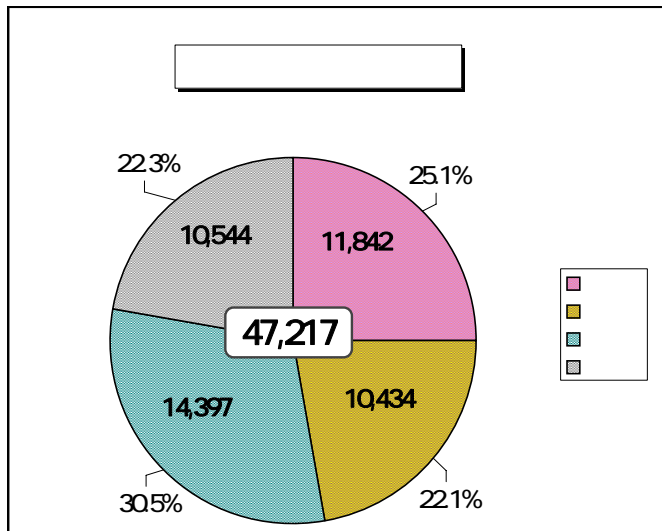
	2004 (16)3		2005 (17)3		2006 (18)3		2007 (19)3		2008 (20)3	
	10,761,043	99.6%	9,126,130	84.8%	8,526,374	93.4%	7,097,626	83.2%	7,107,600	100.1%
	26,861,727	110.8%	30,095,537	112.0%	35,234,340	117.1%	40,119,565	113.9%	43,092,400	107.4%
	37,622,771	107.3%	39,221,667	104.2%	43,760,714	111.6%	47,217,191	107.9%	50,200,000	106.3%
	3,742,042	116.3%	4,067,148	108.7%	4,818,972	118.5%	5,463,472	113.4%	5,888,310	107.8%
	2,211,543	97.4%	2,284,026	103.3%	2,584,478	113.2%	2,767,397	107.1%	3,021,900	109.2%
	5,953,586	108.5%	6,351,175	106.7%	7,403,450	116.6%	8,230,870	111.2%	8,910,210	108.3%
	10,761,043	99.6%	9,126,130	84.8%	8,526,374	93.4%	7,097,626	83.2%	7,107,600	100.1%
	11,925,803	110.2%	13,015,152	109.1%	15,017,634	115.4%	16,913,128	112.6%	18,585,910	109.9%
	22,686,847	104.9%	22,141,282	97.6%	23,544,008	106.3%	24,010,754	102.0%	25,693,510	107.0%
	28,640,433	105.6%	28,492,458	99.5%	30,947,459	108.6%	32,241,625	104.2%	34,603,720	107.3%
	19,111,673	106.0%	19,036,295	99.6%	20,508,873	107.7%	21,384,837	104.3%	23,007,880	107.6%
	9,528,759	105.0%	9,456,163	99.2%	10,438,586	110.4%	10,856,787	104.0%	11,595,840	106.8%
	7,081,389	102.3%	6,806,552	96.1%	6,926,107	101.8%	6,794,817	98.1%	7,121,850	104.8%
	2,447,370	113.6%	2,649,611	108.3%	3,512,478	132.6%	4,061,970	115.6%	4,473,990	110.1%
	3,114,586	110.5%	3,375,916	108.4%	4,278,354	126.7%	4,881,186	114.1%	5,300,000	108.6%
	1,556,707	99.0%	1,879,125	120.7%	2,353,746	125.3%	2,698,709	114.7%	2,909,680	107.8%
	149 17		179 86		225 35		263 79		284 41	
	25		35		45		53		53	
	16.8%		19.5%		20.0%		20.1%		18.6%	
	10,177,452		10,215,352		10,230,852		10,230,852		10,230,852	
	498,294		433,641		464,125		489,360		552,500	
	190,740		352,799		452,263		672,351		835,000	

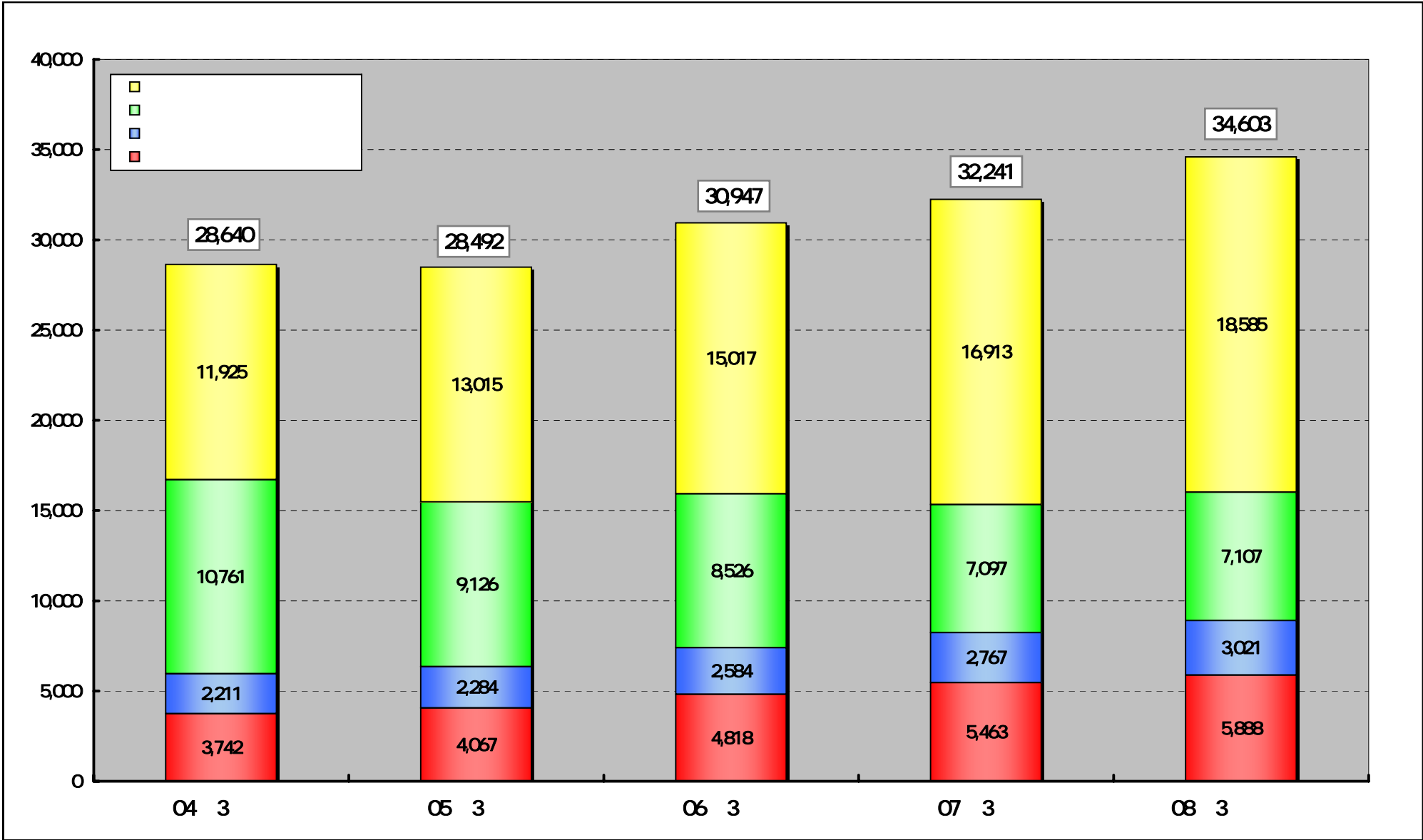
	2003 (15)9			2004 (16)9			2005 (17)9			2006 (18)9			2007 (19)9		
	5,195,296	104.2%	48.3%	4,496,004	86.5%	49.3%	4,041,880	89.9%	47.4%	3,574,287	88.4%	50.4%	3,373,180	94.4%	47.5%
	12,145,415	109.2%	45.2%	13,582,960	111.8%	45.1%	15,873,925	116.9%	45.1%	18,702,203	117.8%	46.6%	20,232,450	108.2%	47.0%
	17,340,711	107.6%	46.1%	18,078,965	104.3%	46.1%	19,915,806	110.2%	45.5%	22,276,491	111.9%	47.2%	23,605,630	106.0%	47.0%
	1,646,325	117.7%	44.0%	1,782,283	108.3%	43.8%	2,096,804	117.6%	43.5%	2,509,379	119.7%	45.9%	2,685,650	107.0%	45.6%
	1,070,475	98.1%	48.4%	1,085,867	101.4%	47.5%	1,195,626	110.1%	46.3%	1,298,778	108.6%	46.9%	1,411,800	108.7%	46.7%
	2,716,800	109.1%	45.6%	2,868,151	105.6%	45.2%	3,292,431	114.8%	44.5%	3,808,158	115.7%	46.3%	4,097,450	107.6%	46.0%
	5,195,296	104.2%	48.3%	4,496,004	86.5%	49.3%	4,041,880	89.9%	47.4%	3,574,287	88.4%	50.4%	3,373,180	94.4%	47.5%
	5,368,322	105.1%	45.0%	5,977,174	111.3%	45.9%	6,971,159	116.6%	46.4%	8,014,112	115.0%	47.4%	8,621,360	107.6%	46.4%
	10,563,619	104.7%	46.6%	10,473,179	99.1%	47.3%	11,013,040	105.2%	46.8%	11,588,400	105.2%	48.3%	11,994,540	103.5%	46.7%
	13,280,419	105.5%	46.4%	13,341,330	100.5%	46.8%	14,305,471	107.2%	46.2%	15,396,559	107.6%	47.8%	16,091,990	104.5%	46.5%
	8,845,731	105.1%	46.3%	8,948,153	101.2%	47.0%	9,584,699	107.1%	46.7%	10,268,134	107.1%	48.0%	10,708,000	104.3%	46.5%
	4,434,688	106.4%	46.5%	4,393,177	99.1%	46.5%	4,720,772	107.5%	45.2%	5,128,424	108.6%	47.2%	5,383,990	105.0%	46.4%
	3,571,228	105.7%	50.4%	3,424,398	95.9%	50.3%	3,408,754	99.5%	49.2%	3,390,132	99.5%	49.9%	3,504,080	103.4%	49.2%
	863,459	109.4%	35.3%	968,778	112.2%	36.6%	1,312,017	135.4%	37.4%	1,738,292	132.5%	42.8%	1,879,910	108.1%	42.0%
	1,205,336	105.1%	38.7%	1,319,408	109.5%	39.1%	1,663,690	126.1%	38.9%	2,124,924	127.7%	43.5%	2,287,000	107.6%	43.2%
	614,057	92.8%	39.4%	685,262	111.6%	36.5%	853,693	124.6%	36.3%	1,074,817	125.9%	39.8%	1,181,160	109.9%	40.6%
	60 36			67 30			83 49			105 06			115 45		
	10,172,552			10,193,352			10,230,852			10,230,852			10,230,852		

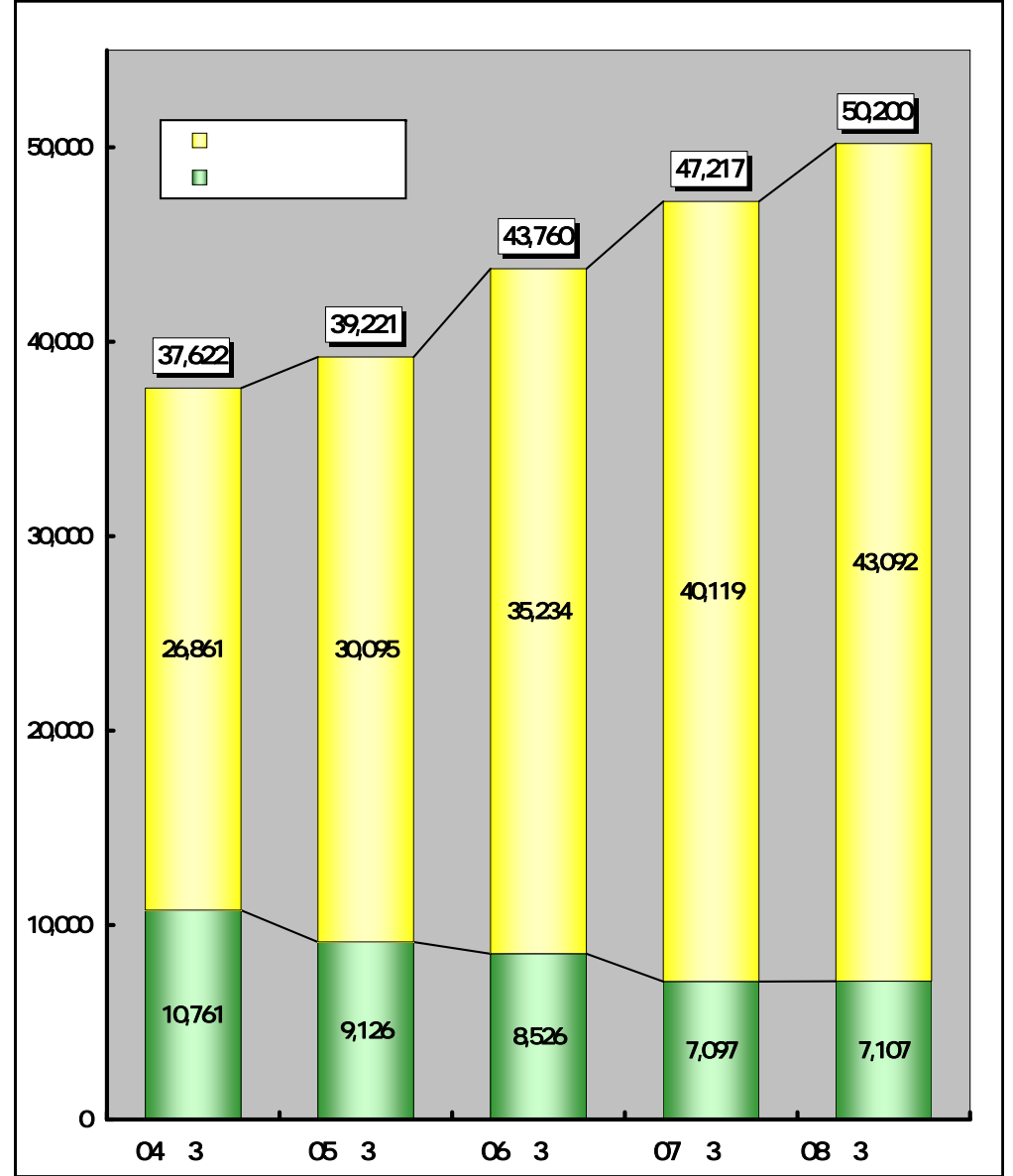
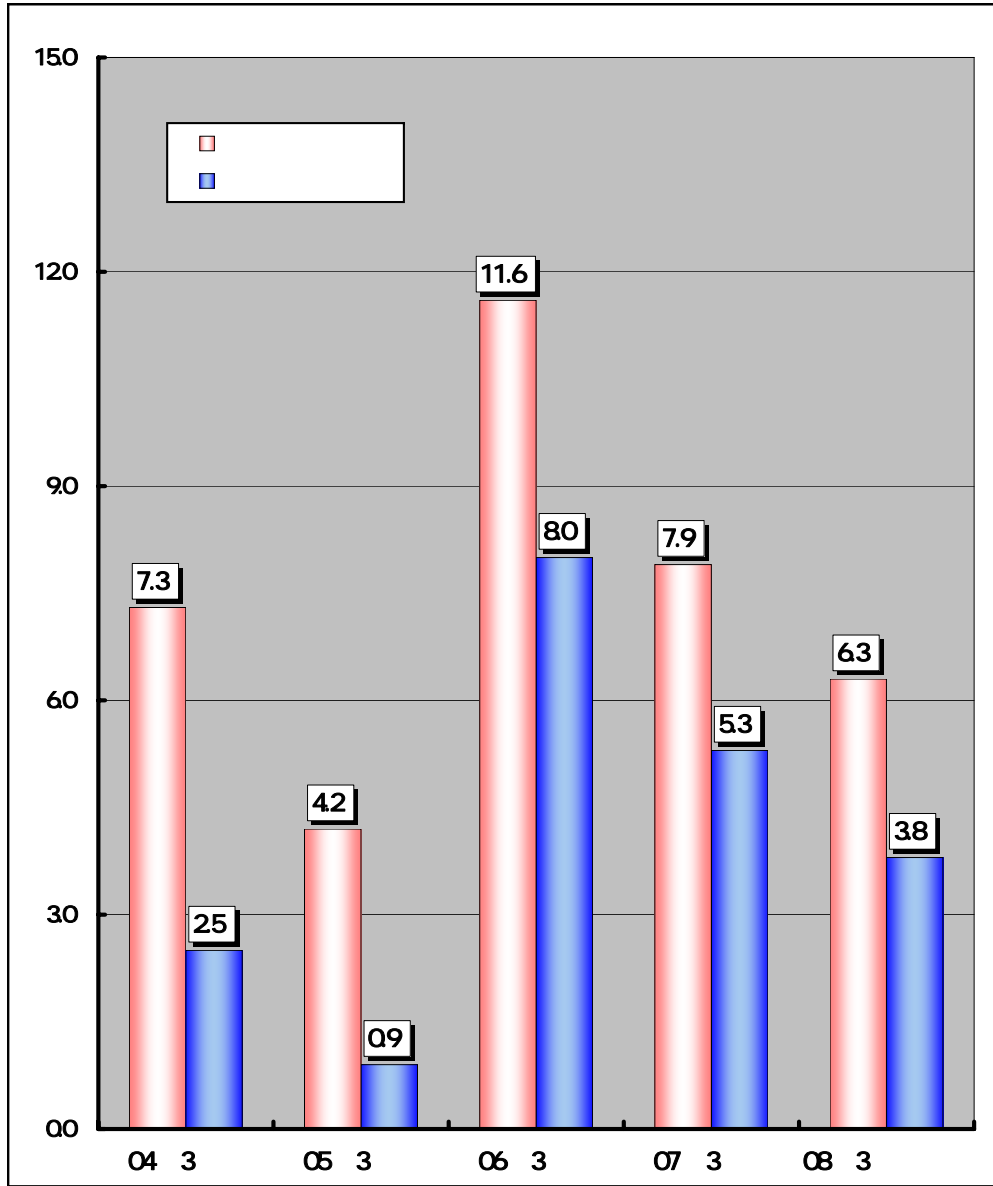
2006 3

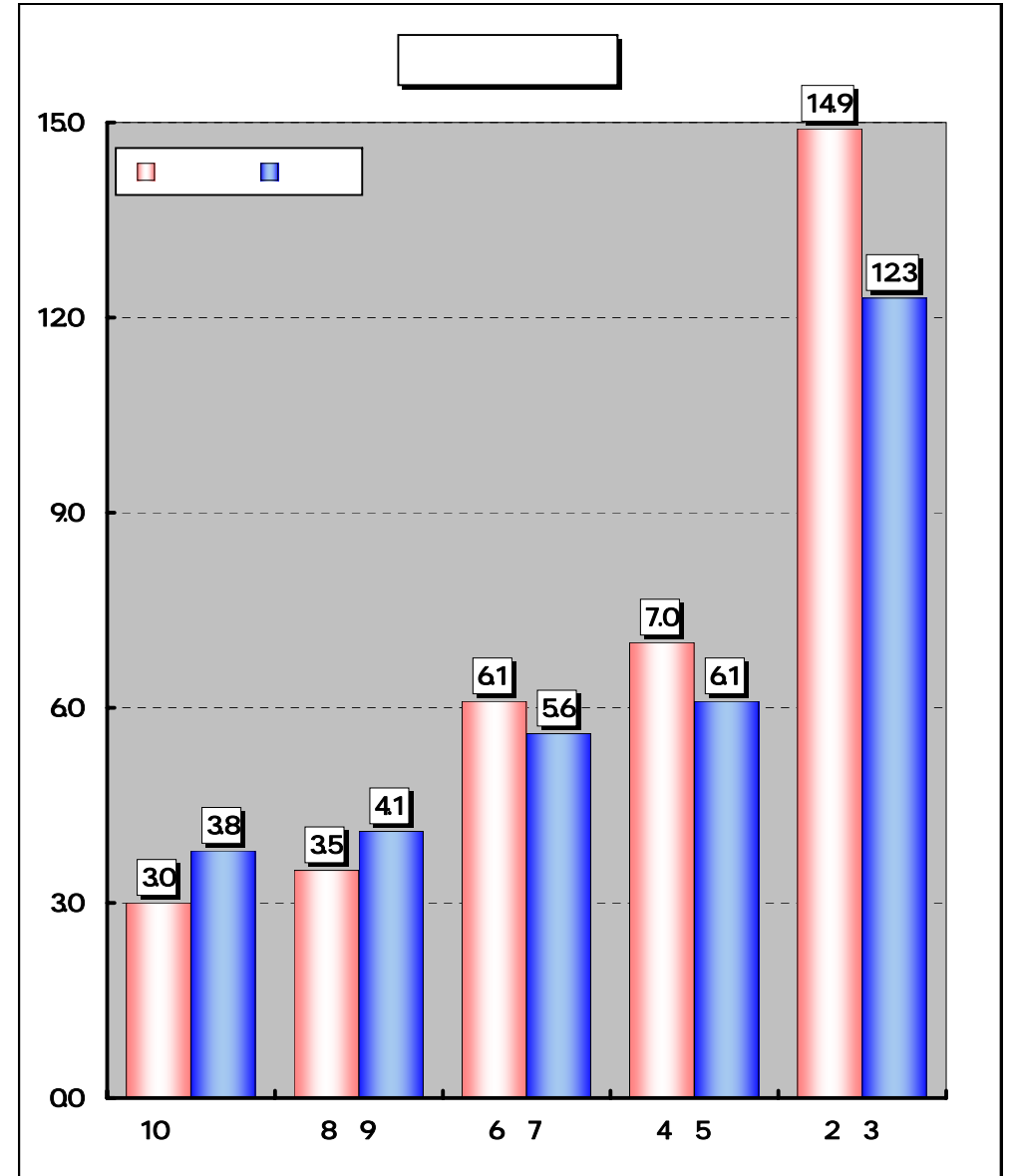
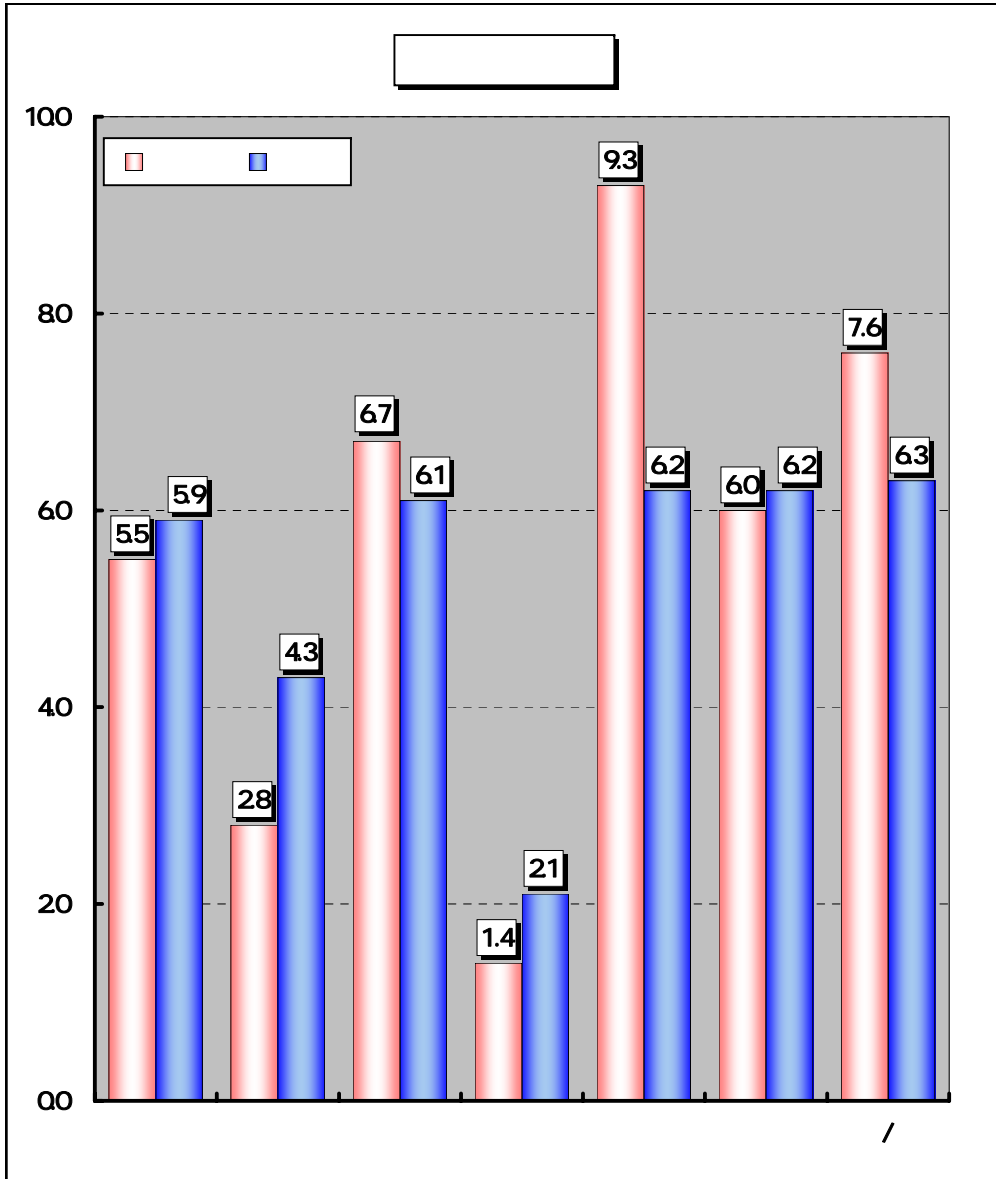


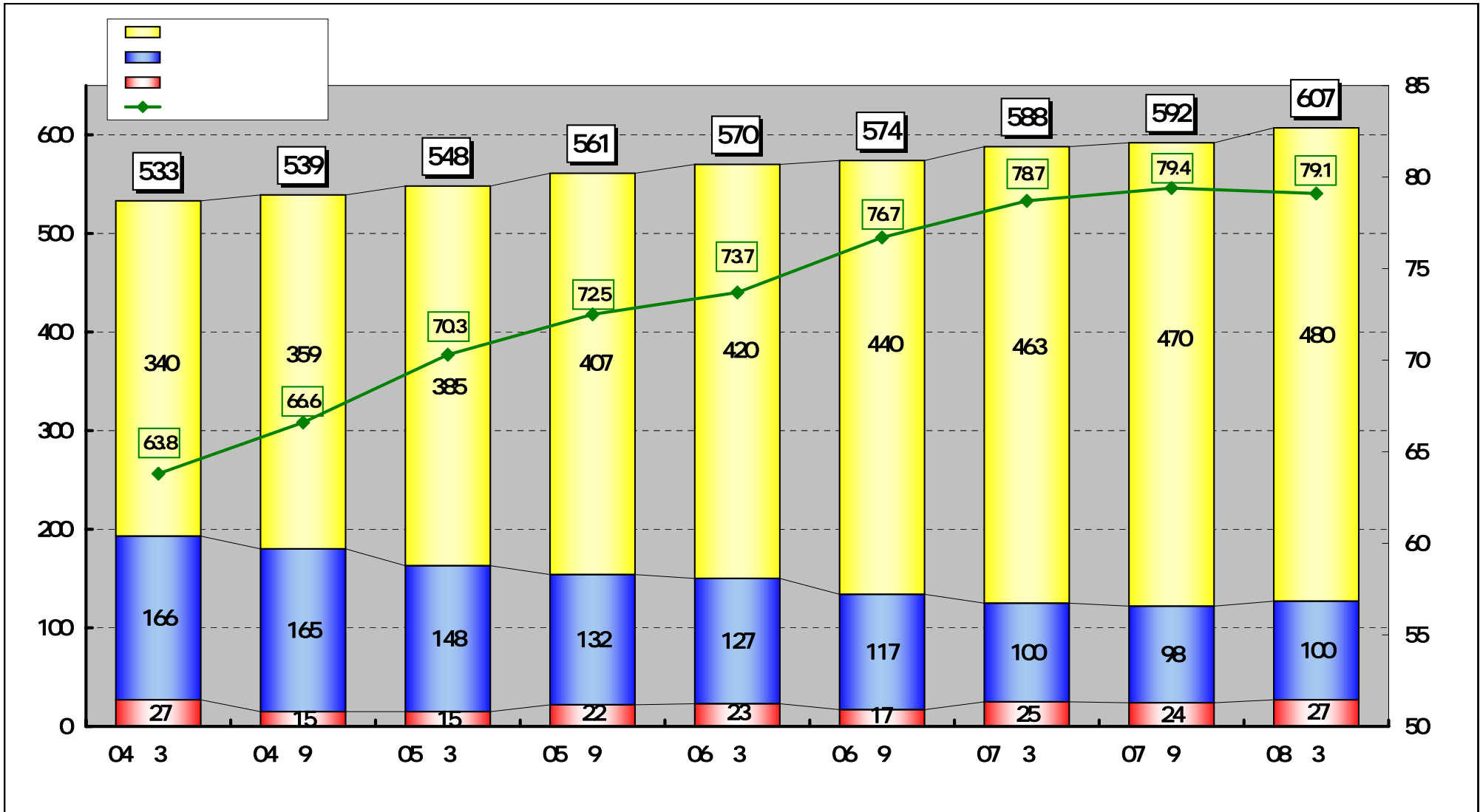
2007 3

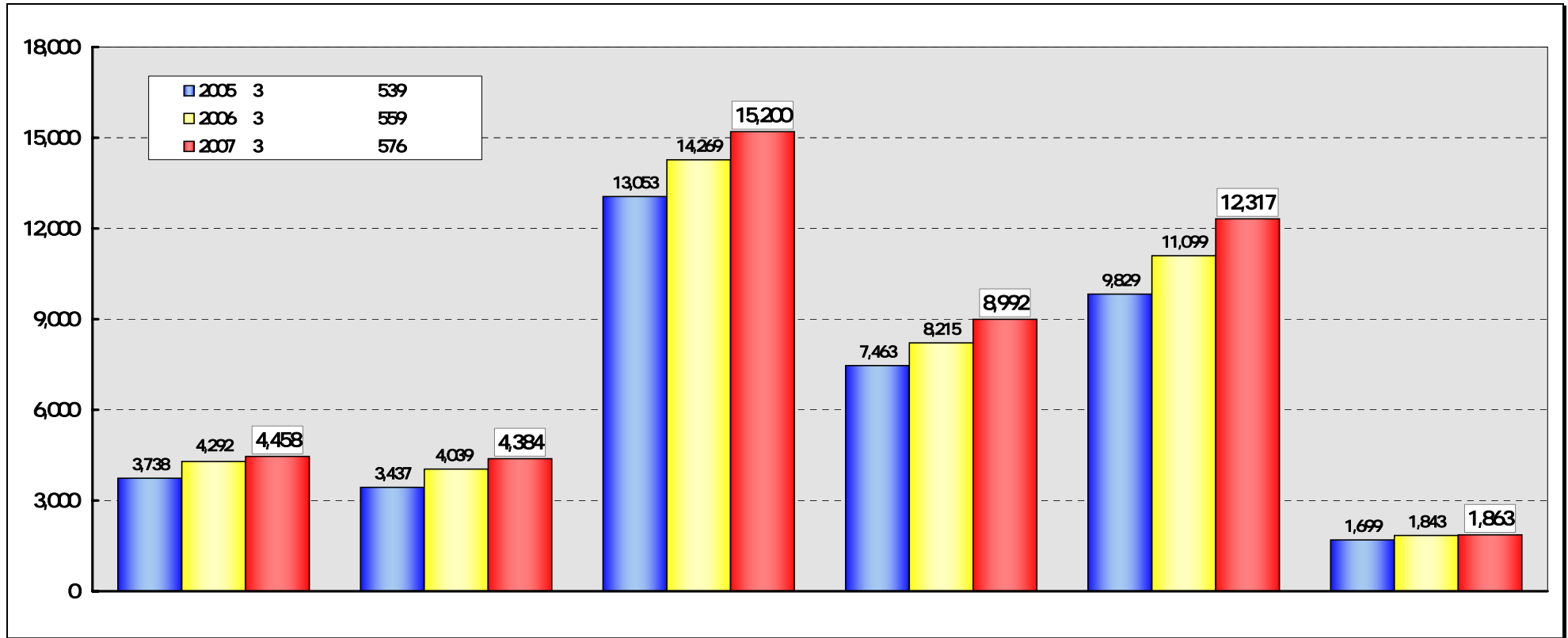








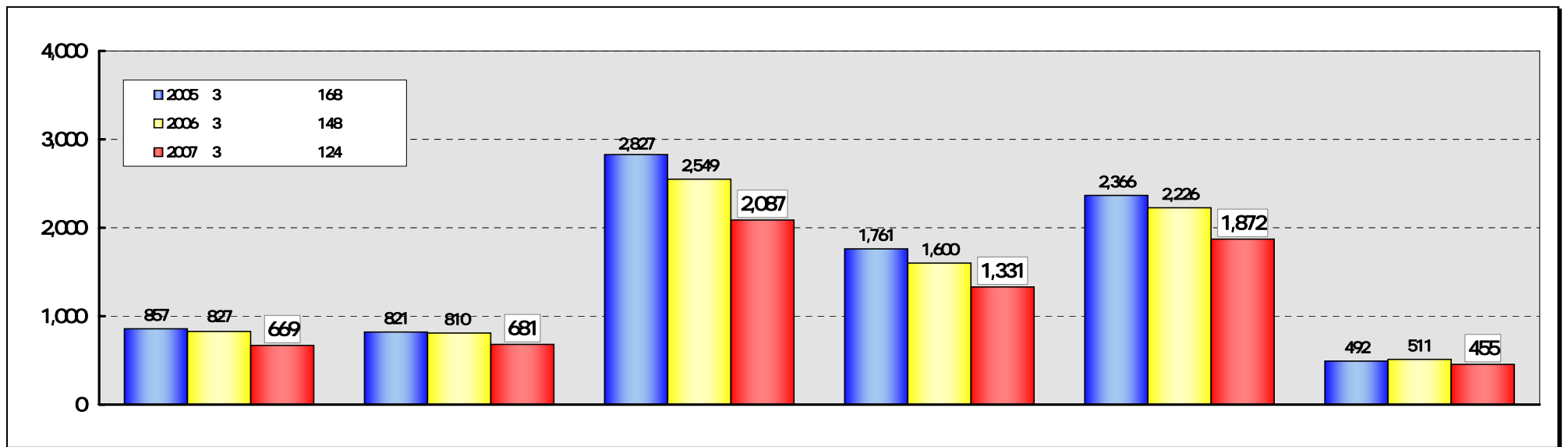
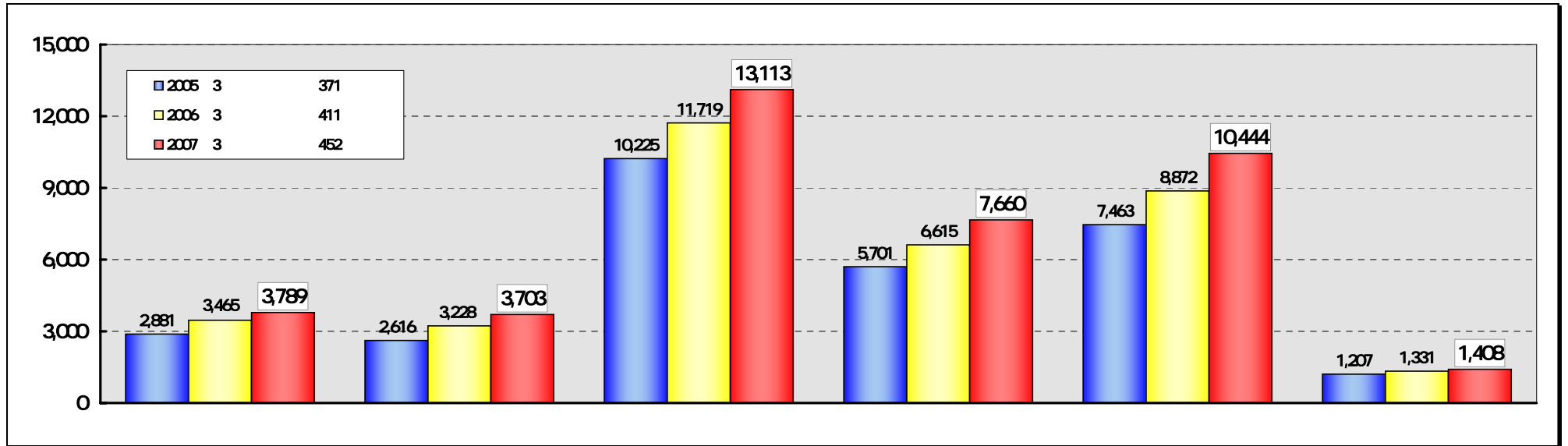


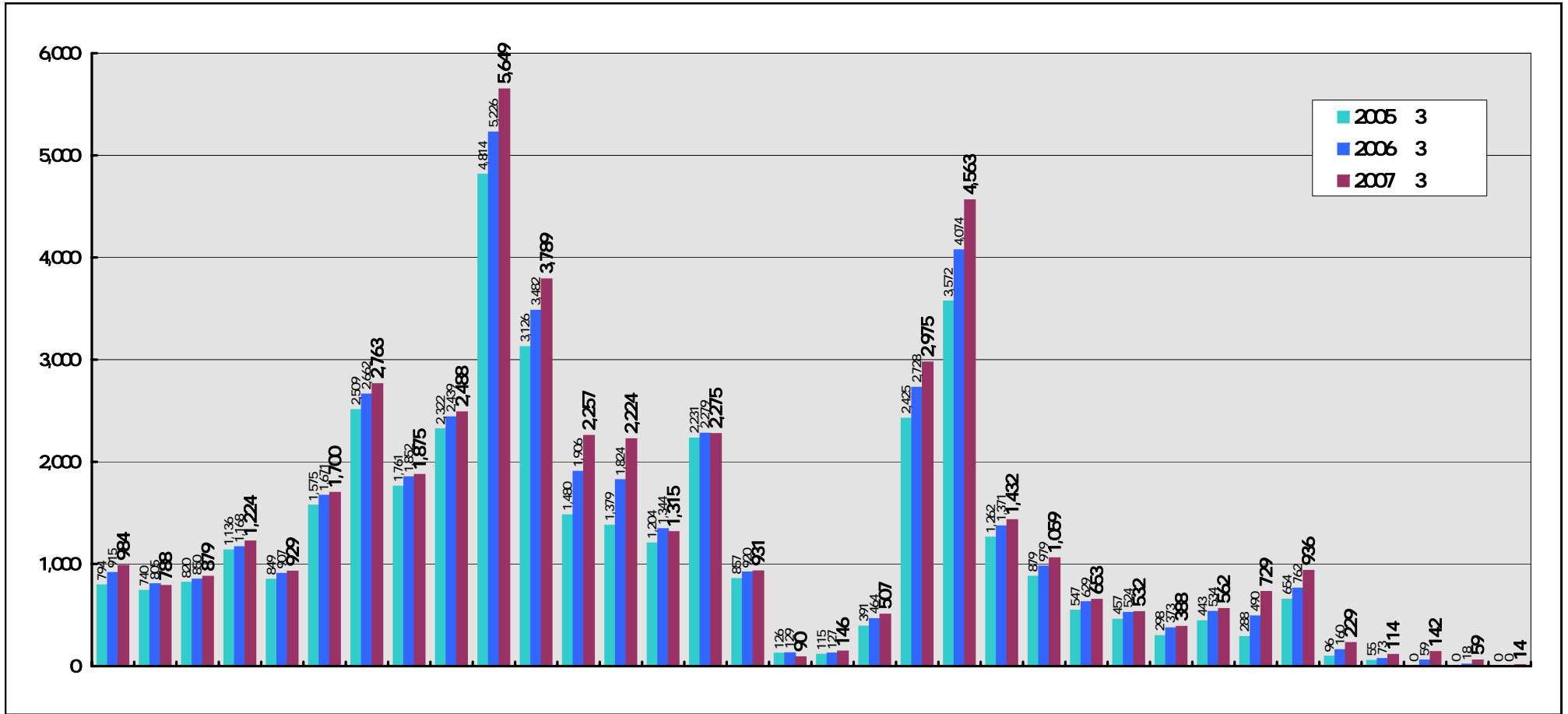


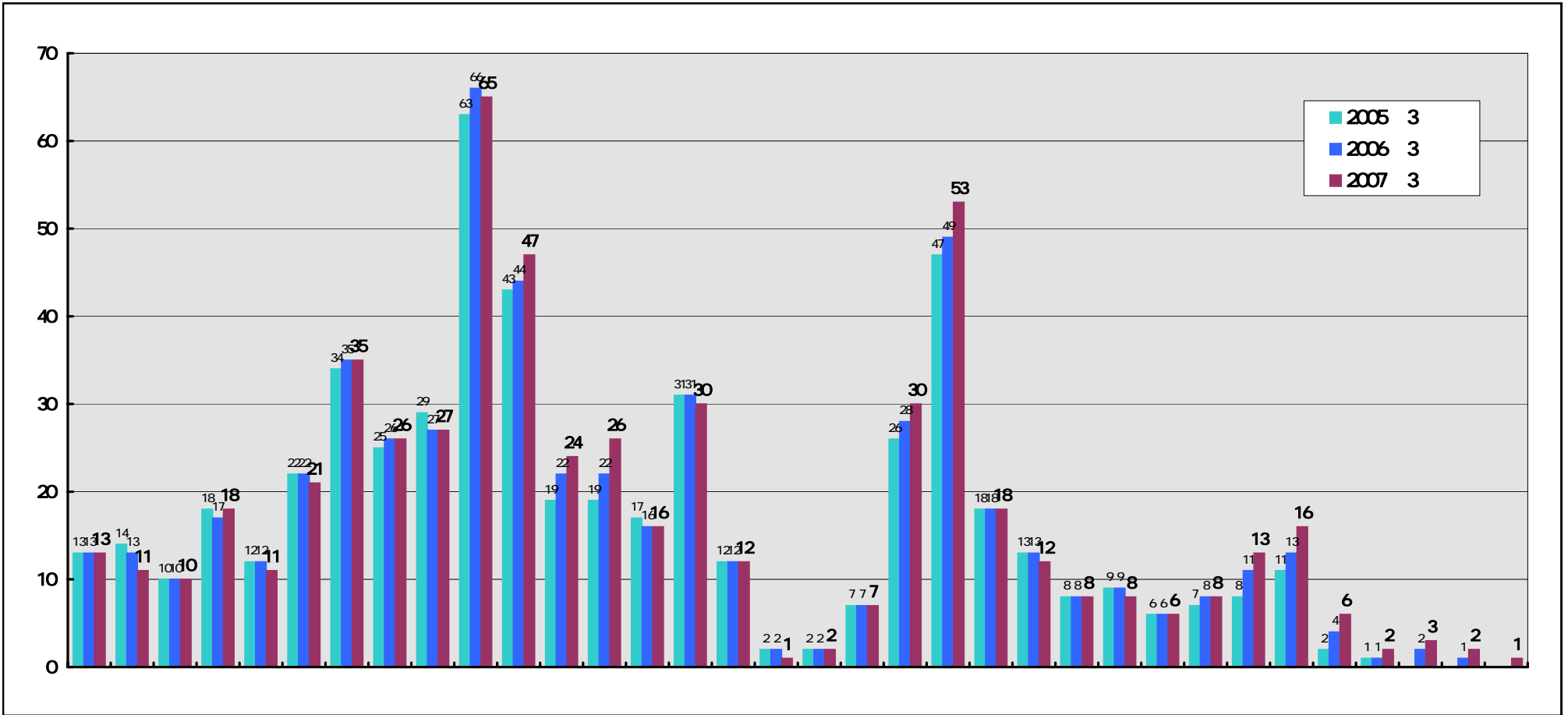
	2005 3	2006 3	2007 3
	3,738	4,292	4,458
	3,437	4,039	4,384
	13,053	14,269	15,200
	7,463	8,215	8,992
	9,829	11,099	12,317
	1,699	1,843	1,863
	39,221	43,760	47,217

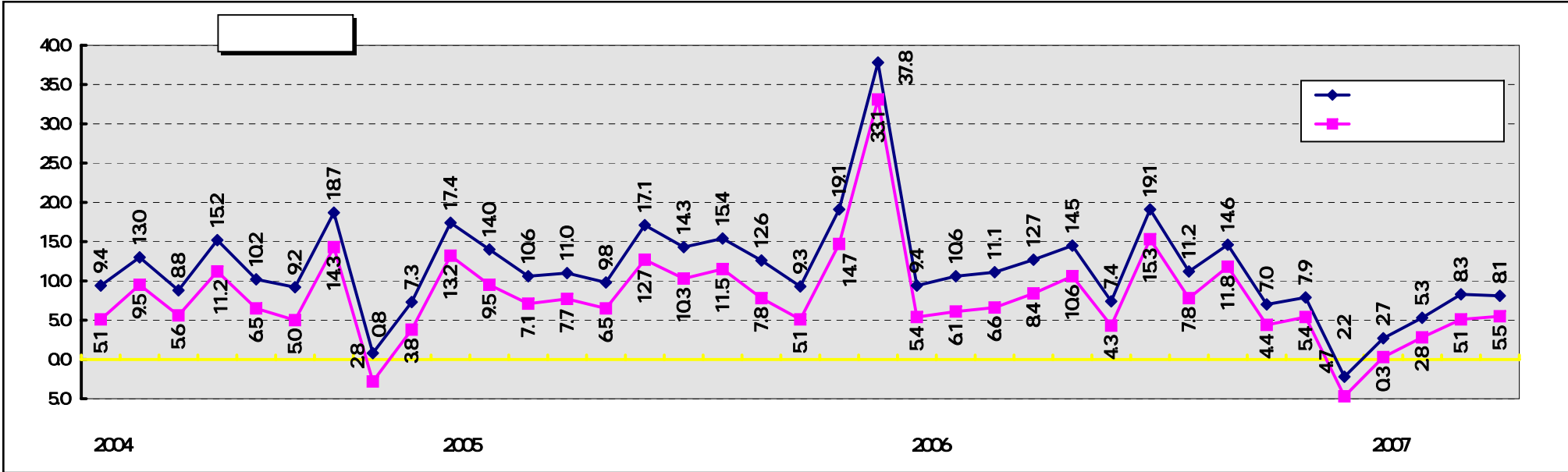
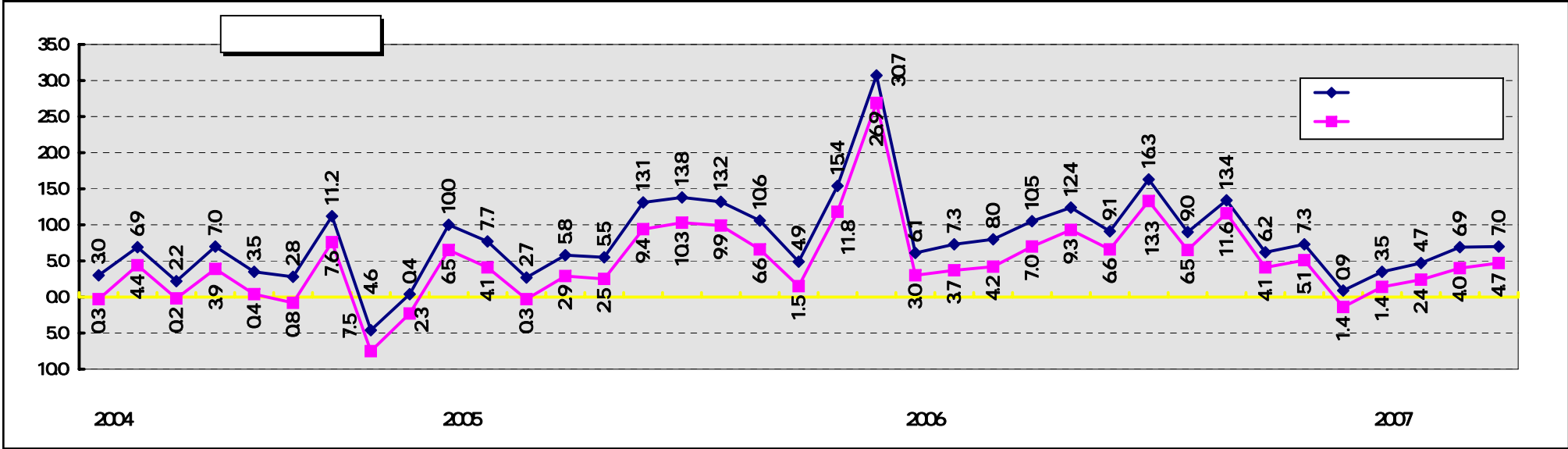
	2005 3	2006 3	2007 3
	4.0%	14.8%	3.9%
	4.1%	17.5%	8.5%
	1.5%	9.3%	6.5%
	6.4%	10.1%	9.5%
	7.4%	12.9%	11.0%
	0.3%	8.4%	1.1%
	4.2%	11.6%	7.9%

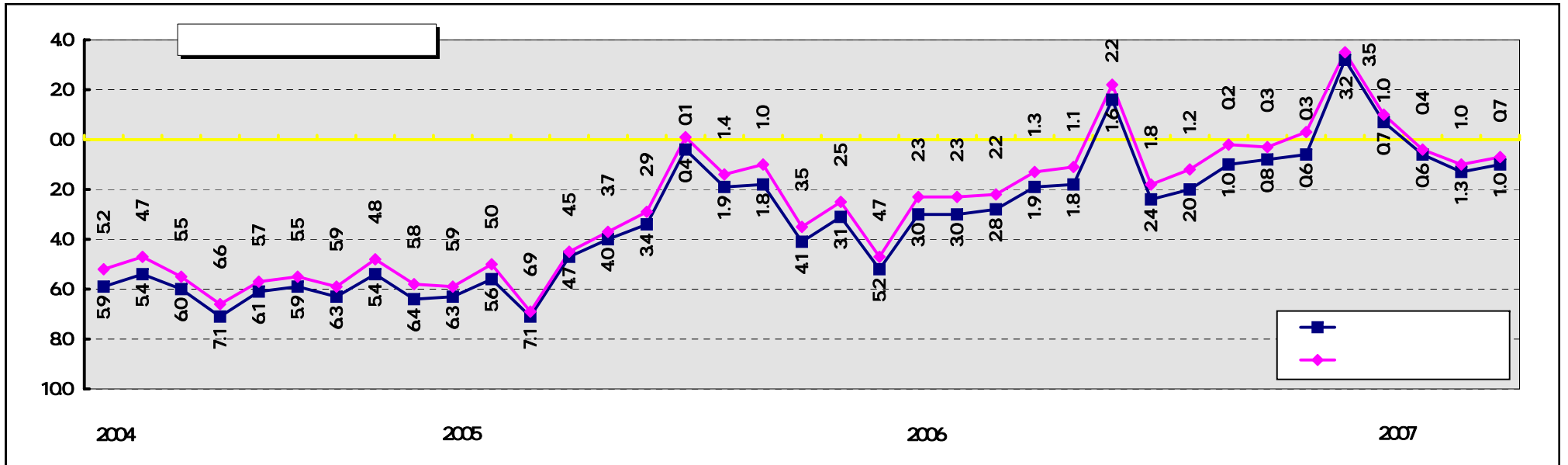
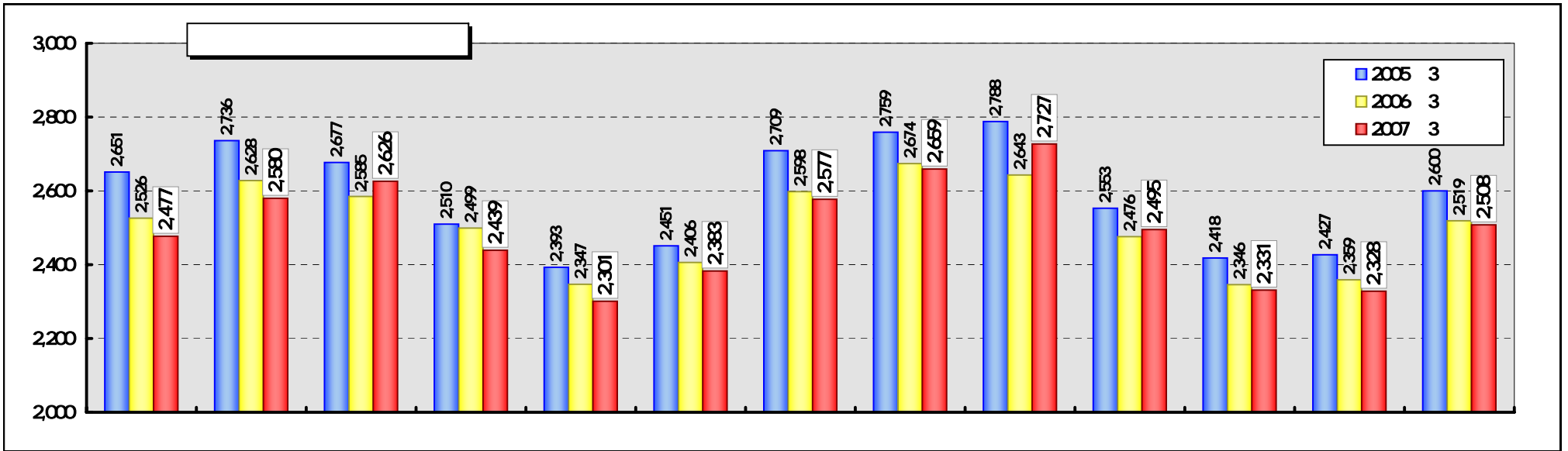
	2005 3	2006 3	2007 3
	9.5%	9.8%	9.4%
	8.8%	9.2%	9.3%
	33.3%	32.6%	32.2%
	19.0%	18.8%	19.0%
	25.1%	25.4%	26.1%
	4.3%	4.2%	4.0%
	100.0%	100.0%	100.0%











	2004 3			2005 3			2006 3			2007 3			
	1,022,433	362,727	35.5%	857,017	312,631	36.5%	827,387	316,139	38.2%	669,571	261,133	39.0%	0.8%
	970,842	306,190	31.5%	821,168	281,080	34.2%	810,793	297,934	36.7%	681,429	262,171	38.5%	1.8%
	3,442,369	1,192,333	34.6%	2,827,291	977,612	34.6%	2,549,960	930,551	36.5%	2,087,343	799,852	38.3%	1.8%
	2,054,949	685,139	33.3%	1,761,880	612,712	34.8%	1,600,179	580,621	36.3%	1,331,474	514,715	38.7%	2.4%
	2,695,574	870,194	32.3%	2,366,316	781,934	33.0%	2,226,984	771,555	34.6%	1,872,375	659,141	35.2%	0.6%
	574,874	158,588	27.6%	492,456	139,015	28.2%	511,067	138,334	27.1%	455,431	128,902	28.3%	1.2%
	10,761,043	3,575,173	33.2%	9,126,130	3,104,987	34.0%	8,526,374	3,035,135	35.6%	7,097,626	2,625,916	37.0%	1.4%

	2004 3		2005 3		2006 3		2007 3		
	1,378,266	103.2%	1,319,741	95.8%	1,363,034	103.3%	1,433,445	105.2%	70,411
	602,200	106.7%	524,442	87.1%	628,693	119.9%	577,426	91.8%	51,266
	287,246	106.6%	284,924	99.2%	278,448	97.7%	286,328	102.8%	7,879
	511,177	113.5%	582,081	113.9%	653,417	112.3%	759,063	116.2%	105,645
	1,505,620	103.3%	1,421,388	94.4%	1,318,175	92.7%	1,200,178	91.0%	117,996
	181,801	76.0%	178,268	98.1%	207,050	116.1%	199,215	96.2%	7,834
	1,271,693	103.9%	1,204,591	94.7%	1,114,755	92.5%	1,022,714	91.7%	92,040
	498,294	88.8%	433,641	87.0%	464,125	107.0%	489,360	105.4%	25,235
	845,087	103.2%	857,471	101.5%	898,406	104.8%	827,082	92.1%	71,324
	7,081,389	102.3%	6,806,552	96.1%	6,926,107	101.8%	6,794,817	98.1%	131,290

	2004 3	2005 3	2006 3	2007 3
	8.5%	9.3%	11.3%	12.6%
	8.3%	8.6%	9.8%	10.3%
	14.9%	15.4%	17.7%	18.1%
	11.1%	12.1%	13.6%	13.9%
	187.3%	207.6%	218.4%	242.6%
	73.7%	69.7%	63.1%	58.2%
	69.3%	65.9%	60.0%	55.6%
	69.6%	71.7%	71.0%	72.8%
	149.17	179.86	225.35	263.79
	1,434.55	1,590.46	1,781.22	1,999.99
	1.5	1.4	2.5	2.6
	14.6	12.5	19.7	19.9
	16.8%	19.5%	20.0%	20.1%
	498,294	433,641	464,125	489,360
	190,740	352,799	452,263	672,351
	3,145,998	2,384,324	3,438,076	3,016,326
	886,531	902,595	1,092,329	951,609
	1,586,975	303,296	346,628	477,423
	672,492	1,178,432	1,999,118	1,587,293
	811,377	1,483,869	2,662,301	5,721,420
			1,060,000	
	1,483,869	2,662,301	5,721,420	7,308,714
	254,433	357,531	460,380	542,225
	39,118	46,230	48,830	50,150